

THE PILCHUCKER

SEPTEMBER 2016

NEWSLETTER FOR PILCHUCK CAMERA CLUB EVERETT WASHINGTON

All images printed in the newsletter are the property of the photographer.



© Sonia Rahm

In this issue:

- Pg. 2 Coming events**
- Pg. 3 Meeting Minutes**
- Pg. 4 Cover Image**
- Pg. 4 Challenge Winner**
- Pg. 6 August Winning Images**
- Pg. 7 August Scores**
- Pg. 8-12 Northern State Hospital Field Trip - by Steve Lightle**
- Pg. 13-15 The Battle of Snoqualmie—Civil War Re Enactment by Steve Lightle**
- Pg. 16 Member List**

If you have something you would like to share in the newsletter, suggestions of things you would like to see, or just general comments, please forward to sonyalang@hotmail.com



The Pilchuck Camera Club Newsletter

Serving members from the Puget Sound Area of Washington State

The Pilchuck Camera Club was organized June 12, 1964 and is a member of the Photographic Society of America (PSA) and the Northwest Council of Camera Clubs (NWCCC). Membership is open to anyone interested in color or monochromatic digital photography. Club meetings are held at 7:00 p.m. on the second Thursday of each month in the Baker Heights Social Hall, 1401 Poplar Street, Everett, WA.



Pilchuck Camera Club Web Page: <http://www.pilchuckcameraclub.com>
Photographic Society of America (PSA) Web Page: <http://www.psa-photo.org>
Northwest Council of Camera Clubs (NWCCC) <http://www.nwcameraclubs.org>

2015 Officers

President - Tracy Carson
Phone 425-343-3164
t.carson1@yahoo.com

Vice President - Sonya Lang
Phone: 425-773-9680
sonyalang@hotmail.com

Secretary - Tim Garton
Phone: 206-714-1668
thgarton@gmail.com

Treasurer - Greg Thomas
Phone: 360-387-7456
thomasigolf@comcast.net

Standing Committee Chairpersons

Membership: Jerry Sorensen
Phone: 425-238-4595

Social - Renata Kleinert and Carol Delaune
Phone: 425-773-9840 photosbyrenata@frontier.com

Sunshine: Open

Club Competition : Jim Basinger
Phone: 360-658-8938 jbasingerokie@comcast.net

PSA Club Representative: Stephen Lightle
Phone 425-330-8623 lightle@comcast.net

NWCCC Delegate: Renata Kleinert
Phone: 425-773-9840 photosbyrenata@frontier.com

Field Trips: Stephen Lightle
Phone 425-330-8623 lightle@comcast.net

Point Records: Jim Basinger
Phone: 360-658-8938 jbasingerokie@comcast.net

Historian: Open

Pilchucker Editor: Sonya Lang
Phone: 425 773 9680 sonyalang@hotmail.com

Web Master: Stephen Lightle
Phone 425-330-8623 lightle@comcast.net

COMING EVENTS

Monthly Club Meeting:

7 pm at the Baker Heights Social Hall
1401 Poplar Everett Washington

September 8, 2016

3 Regular Competition Images
3 Challenge Images — Abandoned
To: jbasingerokie@comcast.net

SEND ALL IMAGES

No later than

September 6

Dimension requirements for submitted images:
No larger than 1920 pixels wide or 1080 pixels tall.

Program:

Special Guest Speaker
Noel Nic'Fergusson



September Refreshments
Tracy Carson

AUGUST 2016 MEETING MINUTES

Date 8/11/2016

The August meeting of the Pilchuck Camera Club is called to order by Sonya Lang at 7:08 p.m. President Tracy Carson was unable to attend. There are 15 members and 1 guest present.

The minutes of the July meeting are approved as printed in the Pilchucker.

Correspondence received: All e-mails received by Steve Lightle regarding various competitions have been forwarded to the club membership.

Treasurer Greg Thomas reported on the August treasury status. There is \$872.89 in the treasury.

Sonya Lang presented certificates to the winners of prior competitions who were in attendance. Steve Lightle presented PSA ribbons.

The program for this month's meeting is Commentary by Judges.

Committee Reports:

Membership: One new member (the visitor at this meeting joined during the meeting).

Social: The following people has signed up for refreshments for the noted months. September – Tracy Carson, October – Sherrie Tallman, November – Jerry Sorenson.

Sunshine: Nothing to report.

PSA Representative: The August PSA Journal is available to members. Prior months are also available.

NWCCC: The November NWCCC Conference is scheduled for November 12th. [Tim Grey](#) is scheduled as the primary speaker. There will be 19 instructors and 24 classes. The venue will be in Buckley. Renata has a list of classes to review. Sign up is available on the NWCCC website. Club members may submit up to 6 images to the conference gallery. Members may also submit images for the RIX Digital Showcase competition slide show. Images for both must be submitted by October 1st. See the NWCCC [website](#) for more details.

Field Trips and Photo Opportunities:

- A trip to the Bodie, CA, ghost town and to Mono Lake is in the planning stage for some time in the latter part of October. Steve Lightle will put together a proposal for the trip and present to the membership.

Image Competition:

Image registration and projection: Steve Lightle Tabulation: Jim Basinger Number of images: 45 Regular Competition, 13 PSA Travel and 25 Monthly Challenge (topic – A Color).

Judges: Renata Kleinert, Sonya Lang, Greg Thomas

Announcements:

Old business: None.

New business:

- The first part of the September 8th meeting will be dedicated to a presentation by Noel Nic'Fergusson, "an experienced speaker, naturalist, explorer and field guide" and owner of WLPhoto and Wilderness Co (<http://www.noelfergussonphoto.com/>). The meeting will be held in the large meeting room of the Mount Baker Community Center. Attendance is free and open to members of PCC and the photographic community. PCC will present the speaker with \$50 to defray expenses. This money will come from the club treasury.
- An issue was raised with the height of our projection screen used for club competitions. It is difficult to see the entire image from the rear part of the room. In the meeting we experimented with raising it by placing it on chairs. This seems to work well. Greg Thomas has volunteered to construct a folding stand to replace the chairs.

Board meeting time and place – No meeting currently scheduled.

Meeting adjourned at 7:44 p.m.

**August Challenge— A Color
White Daisy
By Sonya Lang**



**Cover Image
Tea for One by Sonia Rahm**



I used my Nikon D3200 camera with a Tamron 300-1600 Piezo lens. F/35, 1800mm, no flash was used only soft garden spot lights held over head. Photo taken on my dining room table with a screen behind the teapot.

AUGUST COMPETITION WINNERS



First Place
Winter Flight
Sharon Ely



Second Place
Oxbow Bend
Kevin Siefke

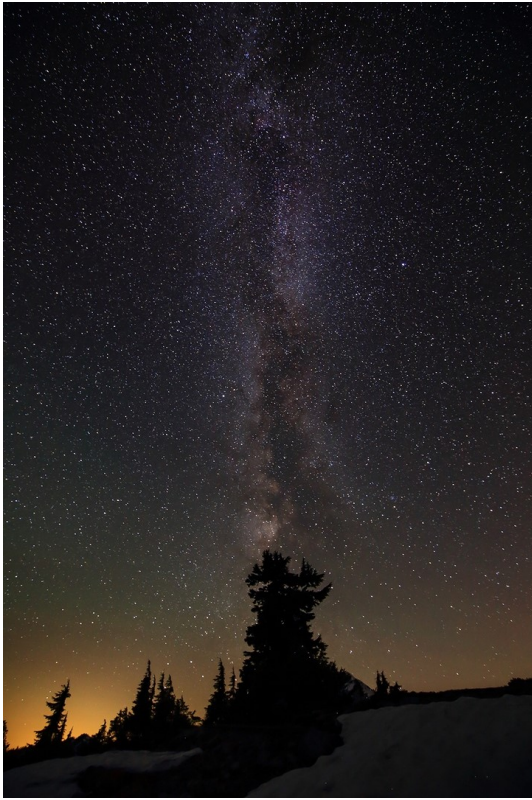


Second Place
Tetons and Beaver Pond
Steve Lightle

Second Place
Yellowstone Family
Sharon Ely



AUGUST COMPETITION WINNERS cont.



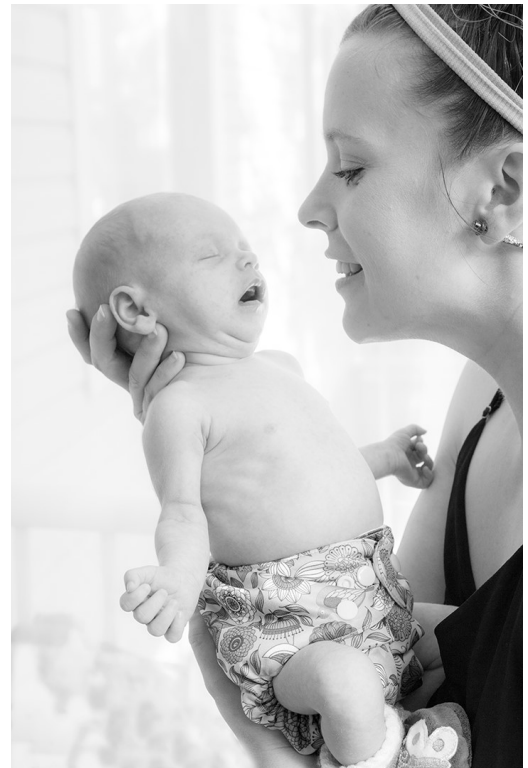
Honorable Mention
Artist Point
Tracy Carson



Honorable Mention
Spectacled Owl
Renata Kleinert



Honorable Mention
Painted Hills
Sharon Ely



Honorable Mention
Amber and Violet
Sonya Lang

PILCHUCK CAMERA CLUB AUGUST 2016 SCORESHEET

Nbr	Title	Maker	Score	Honor
1	DAISY	TRACY CARSON	21	
2	A VIEW THROUGH THE LOFT	TIM GARTON	20	
3	BEST 3	DOUG GOODMAN	20	
4	BUNCH FALLS	KEVIN SIEFKE	20	
5	BUTTERFLY	SENJA YAK	22	
6	SMALL CLAWED OTTER	STEVE LIGHTLE	23	
7	DELICATE ARCH	RENATA KLEINERT	23	
8	DRAGON FLY	JIM BASINGER	23	
9	CLOVER BLOSSOM	GREG THOMAS	21	
10	FEATHERS	SHERRIE TALLMAN	18	
11	JEANNIE	SONYA LANG	21	
12	LILLY	JIM RAHM	20	
13	MUKILTEO LIGHTHOUSE	SONIA RAHM	18	
14	PAINTED HILLS	SHARON ELY	24	HM
15	SHOW SHINE # 1	BILL SCHWWARZ	21	
16	ARTIST POINT	TRACY CARSON	24	HM
17	OPEN DOOR	TIM GARTON	21	
18	BEST 5	DOUG GOODMAN	19	
19	HALL OF MOSSES	KEVIN SIEFKE	21	
20	LOOKING OUT	SENJA YAK	20	
21	TETON VIEW FROM KELLY	STEVE LIGHTLE	23	
22	THE CHURCH ON THE HILL	RENATA KLEINERT	21	
23	SHORT EARED OWL	JIM BASINGER	23	
24	MT RAINIER FROM LAKE	GREG THOMAS	23	
25	SHOW ME YOUR SMILE	SHERRIE TALLMAN	21	
26	TETONS FROM JENNY LAKE	SONYA LANG	23	
27	SUMMER FUN	JIM RAHM	18	
28	TEA FOR ONE	SONIA RAHM	22	
29	YELLOWSTONE FAMILY	SHARON ELY	26	2ND
30	THE CLAW	BILL SCHWWARZ	23	
31	PICNIC POINT SUNSET	TRACY CARSON	21	
32	RETURNING TO THE LAND	TIM GARTON	21	
33	BEST 6	DOUG GOODMAN	21	
34	OXBOW BEND	KEVIN SIEFKE	25	2ND
35	PENGUIN	SENJA YAK	19	
36	TETONS AND BEAVER POND	STEVE LIGHTLE	25	2ND
37	SPECTACLED OWL	RENATA KLEINERT	24	HM
38	SPOONBILL	JIM BASINGER	20	
39	WALKING THE LINE	GREG THOMAS	23	
40	VISTOR EAGLE AT THE ZOO	SHERRIE TALLMAN	22	
41	VIOLET AND AMBER	SONYA LANG	24	HM
42	PAINT ON BACK OF PICKUP	JIM RAHM	23	
43	MY FAVORITE SCOUT	SONIA RAHM	20	
44	WINTER FLIGHT	SHARON ELY	27	1ST
45	MULTNOMAH	BILL SCHWWARZ	23	



Northern State Hospital Farm, Sedro Woolley, WA as photographed by Pilchuck Camera Club Members Tim Garton, Sonya Lang, Steve Lightle, Paul Priebe, and Greg Thomas; Friday, August 19, 2016

"Established in 1909, the Northern State Hospital for the Mentally Ill was a sprawling and remarkably self-sufficient facility with a number of production facilities including a 700-acre farm."

<http://www.atlasobscura.com/places/northern-state-hospital-farm>

Today the farm is abandoned. Abandoned: **Synonyms** derelict, deserted, desolate, disused, forgotten, forsaken, rejected, vacant, vacated, void ignored, neglected, unattended, untended; castaway, cast-off, discarded, jettisoned, junked, refuse, waste; godforsaken, miserable, shabby, wretched; empty, idle.



Foreboding.

It's an eerie feeling walking among the abandoned building. People used to work here, raising dairy cows, milking cows. Now only rust and ruin.

Silence



Vast empty barns, their floors littered with debris.

It's been a long long time since these spaces were occupied.



Buildings that
outlasted the
needs of the
occupants now
sitting empty
and silent.

Windows Into Dark Spaces



I know we're
being
watched.

I can feel it in
the silence.



Image By Tim

Quiet, dark and gloomy. No power flows to light the lights or to the milking machines.

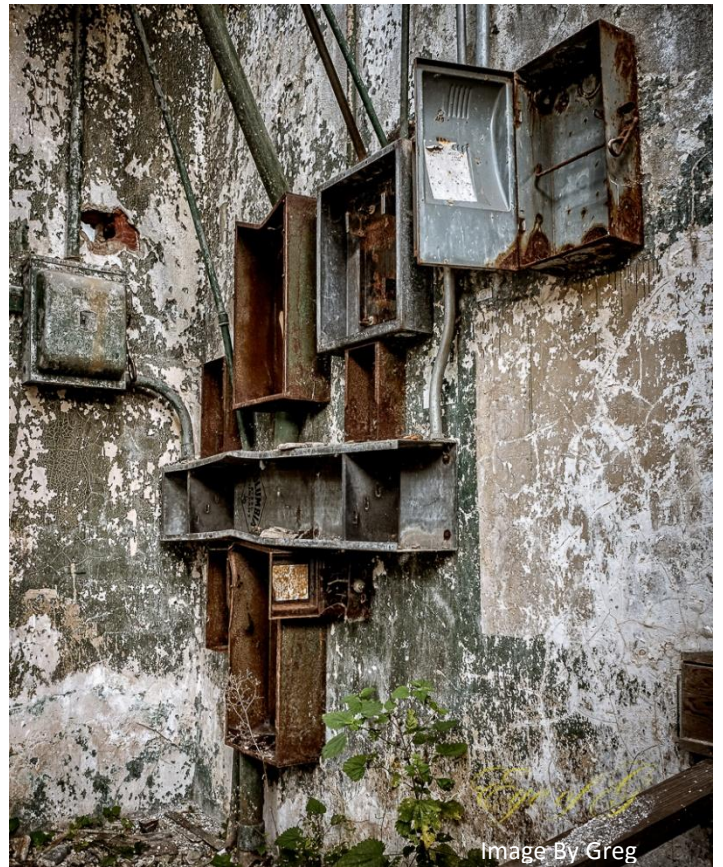


Image By Greg



Image By Steve



Image By Tim

The long disused boiler room



Image By Greg

Fallen, collapsed. No longer needed, no longer cared for.



Abandoned - Forgotten



Only spirits ascend these stairs



The Battle of Snoqualmie - 2016



Image by Steve



Union Forces Advance

Confederate Forces Hold



Image by Steve

Civil war reenactments are a combination of spectacle and living history. All of the participants wear authentic period clothing and uniforms (replicas) and use period appropriate tools. The encampments are set up to demonstrate what life was like during the period of the American civil war. The following images are excerpts from the events of the 2nd day of the Battle of Snoqualmie as photographed by Sharon Ely, Sonya Lang, Steve Lightle and Tim Garton.



Image by Sharon



Image by Sharon



Image by Steve



Image by Steve



Image by Sonya



Image by Steve

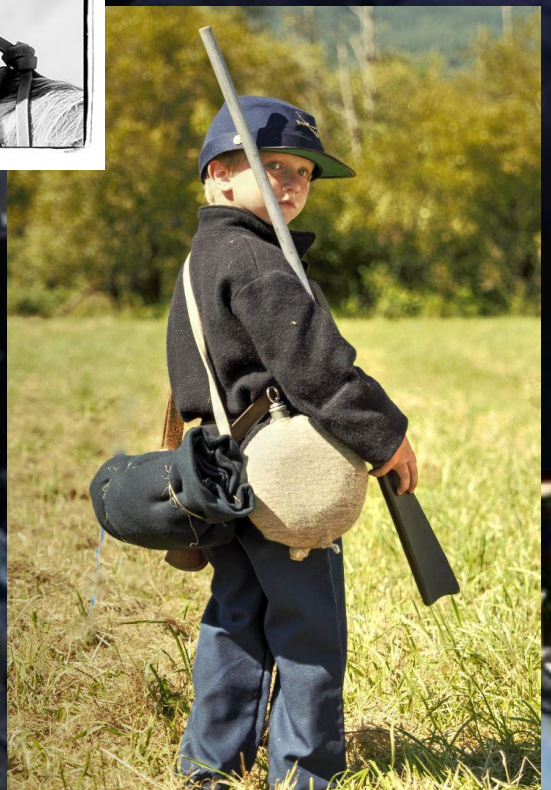


Image by Sonya



Image by Tim

Image by Tim



PILCHUCK CAMERA CLUB MEMBERS

First Name	Last Name	E mail	Phone
Paula	Bailly	paula.bailly@sno.wednet.edu	360-668-5031
Georgina	Barragan	ginafredd@hotmail.com	425-737-0116
Jim	Basinger	jbasingerokie@comcast.net	360-658-8938
Tracy	Carson	t.carson1@yahoo.com	425-343-3164
Linda	Davis	LDavis7734@comcast.net	360-658-8938
Bill	Dewey	retief@deweydrive.com	425-879-9250
Tom	Detchemendy	TomDetch@outdrs.net	360-403-9089
Shane	Elen	3142se1@gmail.com	
Sharon	Ely	sharely@msn.com	253-952-8321
Tim	Garton	thgarton@gmail.com	206-714-1668
Doug	Goodman	goodman.douglas@gmail.com	425-954-0197
Mike	Guderjohn	elrique64@gmail.com	701-770-6983
Andrea	Hitch	andreasaberzadeh@yahoo.com	626-485-9233
Lloyd	Johnson	lj5641@yahoo.com	425-412-3783
Paula	Kelly	paulakc3@gmail.com	425-244-2074
Renata	Kleinert	photosbyrenata@frontier.com	425-355-7758
John L	Laggart	jmnlaggart@msn.com	360-421-3527
Sonya	Lang	sonyalang@hotmail.com	425-773-9680
Chris	Lingenfelter	christine_cunningham@juno.com	425-239-3499
Gary	Lingenfelter	glingen@yahoo.com	425-239-3499
Steve	Lightle	lightle@comcast.net	425-330-8623
Margaret	McLeod	ablemcleod@comcast.net	425-359-2536
Robert	Patrick	rpatrick831@gmail.com	206-450-0620
Jim	Rahm	Jim@rahm.org	360-568-3590
Sonia	Rahm	Sonia@rahm.org	360-568-3590
Janet	Rapelje	jrapleje78@gmail.com	360-652-6623
Bill	Schwarz	Bill@bjschwarz.com	425-422-6367
Kevin	Siefke	ksiefke@comcast.net	425-328-9401
Jerry	Sorensen	sorensenjerry@yahoo.com	425-238-4595
Sherrie	Tallman	SherrieTallman@comcast.net	425-232-2162
Greg	Thomas	thomasigolf@comcast.net	360-303-6102
Harvey	Wade	clevelandh36@hotmail.com	213-219-4900
Janet	Wright	photo@wavecable.com	360-387-7456
David	Yousko	davidyousko@yahoo.com	206-714-7095
Senja	Yakovleff	senja.olson@gmail.com	509-270-9052