

PROPERTY OF THE PILCHUCK CAMERA CLUB.

ORGANIZED JUNE 12, 1964.

The club is a member of the Photographic Society of
America and the Northwest Council of
Camera Clubs.

1995

1996

PILCHUCK COVER PICTURE RECORD

Date	Title	Maker
January 1992	The Country Church	Howard Rix, FPSA
February 1992	Egret	Thomas H. Little, APSA
March 1992	Awesome	Janet Rapelje
April 1992	Hub of Time	Anna Sebring
May 1992	Text	
June 1992	Palm Tree and Beach	Graphic
July 1992	Eagle and Firecracker	Graphic
August 1992	Skull Rock	Graphic
September 1992	Election Train	Anna Sebring, APSA
October 1992	Halloween Pumpkins	Graphic
November 1992	Kooka Burra	Graphic
December 1992	Church and Sleigh	Stan Parmeter
January 1993	Not A Barn	Graphic
February 1993	McDonald Creek	Norman Jensen
March 1993	Serenity	Donald Rapelje
April 1993	Navajo Country	Ted Treleven
May 1993	Native American	JG Archibald
June 1993	Corroboree Time	Larry Sebring
July 1993	Firecracker/Text	Stanley Parmeter
August 1993	Work Of The Sea	Graphic
September 1993	All Tied Up	JG Archibald
October 1993	Scenic	Graphic
November 1993	Standing Alone	Graphic
December 1993	Shuksan In Winter	Stanley Parmeter
January 1994	Needle Ice	Stanley Parmeter
February 1994	1942 Mercury Dime	Tom Clemans
March 1994	Mossy Maples	Tom Clemans
April 1994	Bessie Smith & Howard Hansen	Larry Sebring
May 1994	Morning Dew On Lupine Leaf	Norland King
June 1994	Frontier Light	Anna Sebring
July 1994	Railroad Bridge Scenic	J.G. Archibald
August 1994	Glass	Norland King
September 1994	Really	Tom Clemans
October 1994	Yellow Jacket Eye	J.G. Archibald
November 1994	Half Dome in November	Tom Clemans
December 1994	Christmas Symbols	Tom Clemans
January 1995	Winter Birds	Graphic
February 1995	To The Dungeon	Graphic
March 1995	View of a Rainbow	J. G. Archibald
April 1995	Pioneer Square	Janet Rapelje
May 1995	Lion	Dennis Aley

PROPERTY OF THE
ORGANIZI

The club is a member
America and th
Ca

1995

Page 2

June 1995 Reflection Lake, Mt Rainier
July 1995 Spray Falls
August 1995 Nursing Twins
September 1995 Diablo Dam
October 1995 Maiden in the Forest
November 1995 Be Cautious of the Free Ride
December 1995 Face to Face
January 1996 Winter Birds
February 1996 Inner Beauty
March 1996 Teton Barn
April 1996 Sundown
May 1996 Stairway
June 1996 Reflections
July 1996 Barn Near Steptoe Butte
August 1996 Spring Run-off
September 1996 Waterfall
October 1996 Along The Zion Trail
November 1996 Sunflower
December 1996 Nifty Niche
January 1997 Mt. Robson
February 1997 Janet

Cover Record

Tom Clemans
Philip Jacobson
Don Rapelje
Suzanne Ladd
Tom Clemans
Dennis Alej
Anna Sebring
Graphic
Anna Sebring
Jim Geniesse
Steve Winters
Stephen Lightle
Stephen Lightle
Tom Clemans
Dennis Alej
Dennis Alej
Anna Sebring
J.G. Archibald
Janet Rapelje
Larry Sebring
Janet Rapelje

FORMER CLUB OFFICERS

1986 - 1987

President - John Crawford
Vice President - Anna Sebring
Secretary Fran - Treleven
Treasurer Renate - Kleinert

1987 - 1988

President - Anna Sebring
Vice President - Fran Treleven
Secretary - Philip Mitchell
Treasurer - Eldred Volkman

1988 - 1989

President - Anna Sebring
Vice President - Fran Treleven
Secretary - Janet Rapelje
Treasurer - Eldred Volkman

1989 - 1990

President - Fran Treleven
Vice President - Anna Sebring
Secretary - Janet Rapelje
Treasurer - Larry Sebring

1990 - 1991

President - Fran Treleven
Vice President - Anna Sebring
Secretary - Janet Rapelje
Treasurer - Larry Sebring

1992 - 1993

President - Janet Rapelje
Vice President - Stephen Lightle
Secretary Fran - Treleven
Treasurer - Norman Jensen

1993 - 1994

President - Stephen Lightle
Vice President - Norman Jensen
Secretary - Barbara Wagner
Treasurer - Jim Geniesse

1994 - 1995

President - Stephen Lightle
Vice President - Fran Treleven
Secretary - Barbara Wagner
Treasurer - Jim Geniesse

1995 - 1996

President - Suzanne Ladd
Vice President - Janet Rapelje
Secretary - Dennis Alej
Treasurer - Ethel Geniesse

PROPERTY OF

ORC

The club is a member of
American

1995

VIOLET JOHNSON WILDFLOWER AWARD

1986	"Wild Beauty"	Renate Kleinert
1987	"Plumaria"	Ruth Locke
1988	"Dogwood"	Janet Rapelje
1989	"Calypso"	Jim Geniesse
1990	"Balsamroot"	Linda Sebring
1991	"Calypso Trio"	Jim Geniesse
1992	"Nature's Rock Garden"	Don Rapelje
1993	"Columbia Tiger Lily"	Jim Geniesse
1994	"Bear Grass"	Norland King

THE PILCHUCKER

PILCHUCK CAMERA CLUB NEWSLETTER

VOLUME 27

FEBRUARY 1995

NUMBER



PROPERTY

OF

The club is a
Americ

199

THE PILCHUCK CAMERA CLUB

EVERETT, WASHINGTON

WHAT IS A CAMERA CLUB?

A camera club offers enjoyment from the pursuit of photography, good fellowship between enthusiasts of similar interests, photographic education at all levels of skill, stimulating improvement by competition, and enjoying many advantages which are only available to organized groups.

A camera club usually specializes in one or two specific categories. The selection includes color prints, black and white prints, color slides, stereo photography and video/motion picture photography. You make the choice of what club or clubs will cover your personal interests. Many photographers belong to two or more clubs.

Camera clubs may join the Photographic Society of America (PSA) and the local council of camera clubs. Belonging to these associations provides a wide variety of activities which members may participate in. Attending the conferences, conventions and annual banquets provides access to programs of instruction, documentaries and inspiration. Members come in contact with some of the top photographers in the country and have the opportunity to ask them questions about their photo secrets.

Pilchuck Camera Club is a color slide club. The aims of our club are the enjoyment, mastery and furtherance of color slide photography through cooperation, effort and good fellowship. We always welcome new members and our group is very congenial in all we do. Guests are welcome.

Join a club today and receive the benefit of the member's support, the programs and the club activities.

The Pilchuck Camera Club was organized June 12, 1964 and is a member of the Photographic Society of America and The Northwest Council of Camera Clubs. Membership is open to anyone seriously interested in color slide photography. Club meetings are held at 7:00 p.m. on the second Thursday of each month in the Barber Heights Social Hall, 1401 Poplar Street, Everett, Washington.

The Pilchuck Camera Club 1994 Annual Competition Results

SLIDE OF THE YEAR

	Title	Maker
Slide of the Year:	<i>View of a Rainbow</i>	Janet Rapelje
Second Place:	<i>Mt. Shuksan In Winter</i>	Jim Geniesse
Third Place:	<i>Mara Sunrise</i>	Jim Geniesse
Honorable Mention:	<i>In Yellowstone N.P.</i>	Bessie Smith
Honorable Mention:	<i>Team Roping</i>	Jim Geniesse
Honorable Mention:	<i>Cassawary</i>	Stan Parmeter
Honorable Mention:	<i>Storm Watch</i>	Janet Rapelje
Honorable Mention:	<i>Peeking At Seattle</i>	Don Rapelje

1994 Assigned Subject "SUNRISE/SUNSET"

First Place:	<i>Arizona Sunset #2</i>	Stan Parmeter
Second Place:	<i>Puget Sound Sun Down</i>	Dennis Alecy
Third Place:	<i>Mukilteo Sunset</i>	Dennis Alecy
Honorable Mention:	<i>Arizona Sunset</i>	Stan Parmeter
Honorable Mention:	<i>Coming Home</i>	Dennis Alecy
Honorable Mention:	<i>African Sunset</i>	Jim Geniesse

1994 Violet E. Johnson Wildflower Award

Winner:	<i>Bear Grass</i>	Norland King
---------	-------------------	--------------

Judges: Merrillce Glancy, Phyllis Little, George Thorleifson
Tabulation: Edna Thorleifson

All are members of the Stanwood-Camano Camera Club

THE PILCHUCKER

PILCHUCK CAMERA CLUB NEWSLETTER
VOLUME 27 MARCH 1995 NUMBER 6

PROPERTY

OF

The club is a r
Americ

199



"VIEW OF A RAINBOW"
by JANET RAPELJE



"ON SAFARI IN KENYA"

Jim Geniesse will present this program for our Slide of the Year Banquet. Jim and Ethel Geniesse enjoyed a photo safari to Kenya in July 1994 and Jim has agreed to share his images with us in his show, "ON SAFARI IN KENYA". Jim is an excellent photographer and if you haven't seen one of his shows you are in for a surprise. Join us for this outstanding program and see what can be accomplished with a camera, hard work, determination and a love of photography.



Janet Rapelje receives Slide of the Year first place ribbon for "View of a Rainbow" and an Honorable Mention ribbon for "Storm Watch" from Vice President Fran Treleven.

CONGRATULATIONS TO THE
RAPELJE FAMILY!



Fran Treleven, Vice President, presents Don Rapelje with an Honorable Mention ribbon for his Slide of the Year entry "Peeking At Seattle".

1994 SLIDE OF THE YEAR BANQUET

Pilchuck Camera Club's 28th Slide of the Year Banquet was attended by 51 members and guests. Harvey's restaurant at the Snohomish Airport provided excellent accommodations and service. The food was delicious. Thank you **Suzanne Ladd** for making the arrangements.

A special thanks to **Anna Sebring** for substituting as host for our President, **Stephen Lightle**, who was ill. **Anna** did an excellent job.

Thank you **Emerald City Plaque Company** for donating the engraving on the awards. Thanks to the **Stanwood-Camano Camera Club** for providing judges for our competitions. Judges were **Merrilee Glancy**, **Phyllis Little** and **George Thorleifson**. **Edna Thorleifson** did the tabulation.

Slides for Slide of the Year are chosen from slides entered in the monthly competitions throughout the year. Each member may enter up to three slides in this competition.

Slide of The Year "View of a Rainbow" by Janet Rapelje

See front cover



Second Place "Mt. Shuksan In Winter" by Jim Geniesse



Third Place "Mara Sunrise" by Jim Geniesse

ASSIGNED SUBJECT: "SUNRISE/SUNSET"

1994 SLIDE OF THE YEAR AWARDS

Dennis Alcy	"Coming Home"	12	HM
	"Puget Sound Sun Down"	14	2nd
Jim Geniesse	"Mukilteo Sunset"	13	3rd
	"Tropical Sunrise"	11	
	"Marina Reflections"	11	
Suzanne Ladd	"African Sunset"	12	HM
	"Evening Glow"	11	
	"Days End"	9	
	"Good Morning"	9	
Stan Parmeter	"Stanwood Sunset #2"	11	
	"Arizona Sunset"	12	HM
	"Arizona Sunset #2"	15	1st
Donald Rapelje	"Sunrise Mt. St. Helen"	10	
	"Six A.M."	9	
	"Dawn Over Pilchuck"	10	
Janet Rapelje	"Ocean Sunset"	11	
	"Kalaloch Sunset"	10	
	"Everett Sunset"	10	
Anna Sebring	"Over Everett"	9	
Richard Wagner	"Looking West"	9	

1994 ACHIEVEMENT AWARDS

Sherman Bronsink	500
Richard Wagner	500
Norland King	1000
Suzanne Ladd	1000
Fran Treleven	1500
Norman Jensen	2500
Donald Rapelje	4000
Janet Rapelje	4000
Stan Parmeter	4000
Janet Rapelje	4500
Stan Parmeter	4500
Ron McInnes	5000
Jim Geniesse	10500
Bessie Smith	10500
Jim Geniesse	11000
Anna Sebring	14500



Anna Sebring is presented an achievement award for 14,500 points by Vice President Fran Treleven.

During the regular monthly competition, all slides scoring 20 points or more are counted toward Achievement Award Certificates. A certificate is awarded for each 500 point increment.

LARRY SEBRING MEMORIAL AWARD

Ted and Fran Treleven receive the Larry Sebring Memorial Award for the year 1995. These folks joined the Pilchuck Camera Club on December 1, 1981. Ted is a retiree from the Boeing Company and Fran from the nursing profession. Ted was our president during the 1984 & 1985 term, field trip chairman for eight years and membership chairman for one year. He won the Slide of the Year award with his picture titled "Serenity" IN 1992.

Fran was our president for two years; vice president three years, including this present term; secretary four years and treasurer two years. Fran is kept busy. She won the 1988 Slide of the Year award with her beautiful picture of "Lower Yellowstone Falls."

Both Ted and Fran have transported many members to our club meetings and other activities. They have utilized their hobby in photography by putting on slide shows of their many world travels. Nursing homes, senior centers, churches, camera clubs, Kiwanis clubs and many others have enjoyed these shows. They have given as many as 10 to 20 shows a month for several years. These showings were listed at the Everett Park Department as community services. Ted and Fran have earned this special award presented by Anna Sebring in memory of Larry Sebring for all they have done for our club. Congratulations to both of you and thank you for helping all of us in the club.



Ted and Fran Treleven



Jim Geniesse receives 2nd, 3rd, and an Honorable Mention for his Slide of the Year entries "Mt. Shuksan in Winter", "Mara Sunrise" and "Team Roping".

CONGRATULATIONS TO GREAT PHOTOGRAPHERS!



DENNIS ALEA WINNER!

Dennis Alea's new member to Pilchuck Camera Club took 2nd, 3rd, and an Honorable Mention in the Assigned Subject "Sunrise/Sunset" competition.

NORLAND KING TAKES TROPHY

Norland King receives the Violet Johnson Wildflower competition trophy for his slide "Bear Grass". Also entered were "Avalanche Lily" by Jim Geniesse, "Everlasting" by Suzanne Ladd, "Prickly" by Ron McInnes, and "Crimson Columbine" by Janet Ropelle.



1994 ASSIGNED SUBJECT WINNER SUNRISE/SUNSET.

Arizona Sunset by Stan Parmeter II

SLIDE OF THE YEAR SCORES

Pilchuck Camera Club

March 1995

Jim Geniesse	"Mara Sunrise"	14	3rd
	"Mt. Shuksan In Winter"	14	2nd
	"Team Roping"	13	HM
Harriett Jensen	"First Look"	10	
Norman Jensen	"Hang In There"	12	
Norland King	"Framed"	11	
	"S-Curves"	12	
	"Canoe"	12	
Suzanne Ladd	"Morning Glow"	11	
	"Eagle #1"	10	
	"Soft Center"	9	
Ron McInnes	"Food Display"	11	
	"Clown"	10	
	"Lunch Time"	9	
Stan Parmeter	"Eagle"	12	
	"Cassawarry"	13	HM
	"Crane"	11	
Donald Rapelje	"Snow Geese"	12	
	"Pecking At Seattle"	13	HM
	"Captured Moon"	11	
Janet Rapelje	"Quinalt Rain Forest"	11	
	"Storm Watch"	13	HM
	"View Of A Rainbow"	15	SOY
Anna Sebring	"Ice Fall"	11	
	"Standing Alone"	10	
	"My Friend"	12	
Bessie Smith	"My Favorite Iris"	11	
	"In Yellowstone N.P."	13	HM
	"Black Berries"	9	
Barbara Wagner	"Autumn Gold"	9	
	"Reflections"	9	
	"Red & Gold"	9	
Richard Wagner	"Alaskan Fisherman"	10	
	"Hitchhiker"	9	
	"Buddies"	11	

VI JOHNSON WILDFLOWER AWARD

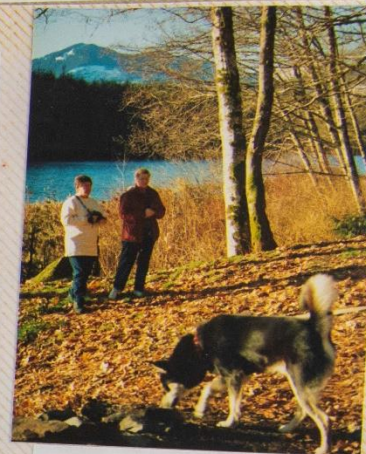
Jim Geniesse	"Avalanche Lily"	9	
Norland King	"Bear Grass"	14	1st
Suzanne Ladd	"Everlasting"	9	
Ron McInnes	"Prickly"	9	
Janet Rapelje	"Crimson Columbine"	9	

BAKER LAKE FIELD TRIP

The weather was marvelous for the field trip to Baker Lake on Saturday, January 21st. Eight members participated in the outing and spent the day photographing Mt. Baker, Mt. Shuksan, ponds, snow scenes, hoarfrost crystals, gray jays, frosty leaves and Baker Lake. Not much escaped the camera lenses on this spectacular day. Wagners' beautiful dog, Sam, was also the subject of several photos as he investigated all the wonders of nature. The sack lunches were enjoyed at Baker Lake and a good time was had by all.



Don & Susanne with photo techniques



Susanne Ladd Janet Rapelje
Wagners beautiful dog Sam our mascot



Susanne - Barbara - Janet



Lunch time with Mt. Baker

1st photo outing of 1995.
Great day at Baker Lake and beyond.
Cold but beautiful. Cameras, tripods
and enthusiastic camera buffs did not
miss anything.
Thanks Don for a great field trip!



Jensen's lunch room
Steve, Janet, Susanne & Norm

NATURE COMPETITION

April 13, 1995

"Alert Cheetah"	Jim Geniesse	11
"Rock & Clouds"	Ron McInnes	1
"Busy Bee"	Norland King	3
"Mirrored Skunk Cabbage"	Don Rapelje	3
"Short Cut To Telluride"	Dennis Aley	0
"Rufous Hummingbird"	Janet Rapelje	11
"Red & Black"	Ron McInnes	0
"Hi There"	Norland King	4
"Scotch Blue Bell"	Don Rapelje	0
"Frosted Leaf #2"	Janet Rapelje	1
"Pecking Order"	Norland King	4
"Into The Forest"	Don Rapelje	1
"Dark Eyed Junco"	Janet Rapelje	12
"Parrot"	Suzanne Ladd	8
"Flannel Flower"	Suzanne Ladd	1
"Kookaburra"	Stan Parmeter	10

1995 ANNUAL ASSIGNED SUBJECT

"CHURCHES" or any part of a church was chosen for the assigned subject for 1995.

QUARTERLY ASSIGNED SUBJECTS FOR 1995

The quarterly assigned subjects for 1995 are the letters of the alphabet. We were planning on doing the complete alphabet for the first quarter, however, at the board meeting it was decided to split the alphabet into four sections and have this as our four quarterly subjects. The letters are divided as follows:

January, February, March -
A, B, C, D, E, and F.

April, May, June -
G, H, I, J, K, and L

July, August, September -
M, N, O, P, Q, and R

October, November, December
S, T, U, V, W, X, Y, and Z

The idea is to take a slide of a subject beginning with each letter assigned for the quarter. Examples would be apple for A, book for B, cat for C, etc. Be creative and try to find subjects that other photographers may overlook. Have fun and enjoy these assignments. The first quarterly slides will be shown at the April meeting.

*To get anywhere, strike out for somewhere, or
you'll get nowhere.*
Mariha Lupton

PHOTO TIP

You can alter harsh light by using a diffusing material between your camera and the subject if it is small enough such as a flower or child. You can fill shadows by using a reflector, such as a piece of white cardboard or foil to shine light back onto the subject.

FUN AND PHOTOGRAPHY

Enjoying yourself and being aware of your surroundings is a major part of having fun while searching for those special images. Have you ever thought of photography as an expression of yourself. As you look through the lens of your camera you see a different view point than any one else. You decide on what part of the scene is pleasing to you and how it should be photographed. Let your senses determine what pleases you and forget the rules, formulas, and technology. What is pleasing to someone else may not interest you in the least.

When on a photo search, discover new subjects by really looking at what is around you. Let your imagination loose, take your time and really see what is there. Learn to see light and how it changes the color, depth, and the mood of the subject. If the light is good, take the photo now! Returning later will give you a completely different perspective. The direction of light creates specific visual changes.

Relax and take the time necessary to carefully make the image you visualize come into being. Look at photography as an adventure with a new idea in the making. Express yourself through your photography and have the satisfaction of creating the subject as you see it. Above all, enjoy yourself and have fun!

SUNSHINE NEWS

On May 29, Janet Rapelje fell from a step stool and injured her knee and broke a bone in her foot. She will be laid up for awhile but hopes to make the trip to Alaska with the aid of crutches and a lot of assistance from Don.

Harriett Jensen continues to improve and gain her strength back. She hopes to attend the June meeting.

Eldred and Marjorie Volkman continue to struggle with health problems.

SUNSHINE REPORT

Idela Lewis is recuperating from her accident following the March 9 meeting. *Norland King* received good news from his doctor after his recent surgery and is doing well. *Howard Hansen* is gaining strength back slowly and received good reports from his doctor. *Eldred and Marjorie Volkman* are getting out to the Grange luncheon. *Harry Ladd* is home from the hospital and doing fine. Best wishes and good health to all of you.

Camera Club

April 1995

May 11, 1995

"Fall At Mt. Rainier"	Jim Geniesse	27 1st
"Paintbrush & Red Rocks"	Jim Geniesse	25 2nd
"Yawn"	Peggy Lynn	24 3rd
"Judy"	Peggy Lynn	24 HM
"Skunk Cabbage"	Norland King	24 HM
"Jeweled Fungus"	Janet Rapelje	24 HM
"Sydney At Sunset"	Suzanne Ladd	24 HM
"Echoes"	Norland King	21
"Pholiota Fungi"	Janet Rapelje	23
"Colorful Fields"	Ron McInnes	20
"Two Views"	Don Rapelje	20
"Pencil Posts"	Steve Lightle	21
"Roddy"	Dennis Alely	22
"Old Faithful"	Jim Geniesse	23
"Wizard Island"	Stan Parmeter	23
"Trillium Tongue"	Anna Sebring	20
"Protea"	Suzanne Ladd	20
"Camellias"	Ron McInnes	23
"Hot"	Don Rapelje	22
"Just Needs A Little Paint"	Steve Lightle	20
"Li Cat"	Dennis Alely	22
"Feeding"	Peggy Lynn	23
"Goose-In-Tux"	Stan Parmeter	22
"A Point Of Interest"	Anna Sebring	18
"Statues"	Norland King	22
"Juniper Tree"	Janet Rapelje	21
"Iron Birds Don't Fly"	Ron McInnes	21
"Serenity"	Don Rapelje	21
"Marymoor Windmill"	Steve Lightle	23
"Bear Bath"	Dennis Alely	23
"Black Cockatoo"	Suzanne Ladd	17
"Windmill"	Bessie Smith	21
"Resting"	Stan Parmeter	16
"Snow Frosted"	Bessie Smith	21
"Perfection"	Anna Sebring	22
"Big 4 Mtn"	Bessie Smith	19

Judges: Norland King, Suzanne Ladd, Anna Sebring
Alternate: Ethel Geniesse Tabulation: Janet Rapelje
Registration: Ron McInnes Projection: Ron McInnes

NATURE COMPETITION

April 13, 1995

"Alert Cheetah"	Jim Geniesse	11
"Rock & Clouds"	Ron McInnes	1
"Busy Bee"	Norland King	3
"Mirrored Skunk Cabbage"	Don Rapelje	3
"Short Cut To Telluride"	Dennis Alely	0
"Rufous Hummingbird"	Janet Rapelje	11
"Red & Black"	Ron McInnes	0
"Hi There"	Norland King	4
"Scotch Blue Bell"	Don Rapelje	0
"Frosted Leaf #2"	Janet Rapelje	1
"Pecking Order"	Norland King	4
"Into The Forest"	Don Rapelje	1
"Dark Eyed Junco"	Janet Rapelje	12
"Parrot"	Suzanne Ladd	8
"Flannel Flower"	Suzanne Ladd	1
"Kookaburra"	Stan Parmeter	10

THE PILCHUCKER

PILCHUCK CAMERA CLUB NEWSLETTER

VOLUME 27

APRIL 1995

NUMBER 7



P.S.A. Competition Results

by Howard C. Hansen

International Club Competitions - Color Slide Division

The results from the December judging, which was hosted by the Monticello Camera Club of Longview, WA, are as following:

Mara Sunrise	by Jim Geniesse	9 Points
Moon Lit	by Suzanne Ladd	11 Points
Food Display	by Ron McInnes	11 Points
Lonesome Rails #2	by Donald Rapelje	11 Points
Skykomish River	by Donald Rapelje	12 Points
Mill at Crystal	by Jim Geniesse	13 Points

This 67 point total places the Pilchuck Camera Club in a tie for 8th place with the f:67 Camera Club, #2 Rising Stars, of Bremerton, WA. The February judging will be hosted by the Great Falls Camera Club of Great Falls, MT.

Photographic Society of America

1995 SEATTLE REGIONAL CONVENTION MAY 25-28

Sponsored by the Puget Sound Chapter of the Photographic Society of America, this convention has a lot to offer. There are tours to Tillicum Village and the Spirit of Washington Dinner Train. Twenty presentations and shows will give a look at what is new, different, and exciting in the world of photography and will show you how to create something different.

Two of Pilchuck Camera Club's members, Janet and Don Rapelje, will be working with the hospitality committee at this convention. They hope to see some of you enjoying the programs and the fellow photographers from all over the United States.

For information, call Ruth Locke at (206) 743-8535. Hurry! It's almost here!

The convention will be held at the Hyatt Regency Hotel, 900 Bellevue Way N.E., Bellevue, WA (206) 462-1234

NWCCC TRAVELING SLIDE RESULTS

Pilchuck Camera Club
Judged by Abbotsford Photo Arts Club

1st	"Gr Teton Mt."	by	Anna Sebring
2nd	"Andrea & Allison"	by	Jim Geniesse
3rd	"Boat Tracks"	by	Stan Parmeter

PHOTO TECHNIQUES



THE COVER PHOTO - ANOTHER LOOK

Electronic Imaging. There are those that think it's the greatest innovation to photography since the glass plate, others would have you believe it is nothing more than a crutch for poor photography and or composition. No matter what you may think of it, it's here to stay. Just a small example of what electronic imaging can do. The same picture that is on the cover, except with some of the garbage removed, in fact the entire garbage can removed.

by Dennis Aley

ABCs OF PHOTOGRAPHERS

Ask questions of other members when in doubt.
Be sure to use a tripod.
Consider lighting.
Develop experience by trying different exposures.
Eliminate extra material -- get one story in your picture.

First -- compose your picture.
Gain advantage by finding a spot and returning when conditions and weather are right.
Hard work pays off with close-ups.

Ideas are what you really need.
Just be alert -- good pictures are everywhere.
Keep your camera with you.
Let your imagination take you on new adventures.
Make it your business to take pictures which have impact.

Never give up.
Other photographers succeed, so can you.
Prepare properly for vacations, (film, cable release, lenses, tripod, exposure meters, crossed fingers).
Quit envying the award and H.M. winners -- do something about it -- like working harder!
Remember to jot down ideas, keep records.
Surely if you keep at it something will turn out good (if only by coincidence)!

Turn in your slides for each competition -- you can't win if you don't enter.

Use other photographers know how.
Very often we let go of an idea too soon.
Watch for unusual lighting, color and patterns.
Xtra benefits await you if you keep trying.
You can succeed!

Zoom will go your heart when you get that Slide-of-the-Year Award!

Emaline G. Parke

WHAT ARE THE JUDGES LOOKING FOR?

TECHNIQUE

They want to see reasonably good technique. A modicum of skill.

They want to see signs of care and pride in the slides.

Exposure: Overexposed slides are out! A definite nono.

Are you bracketing exposures to maximize color saturation?

Do you check your slides by projecting them before competition?

Dust: Most judges will not tolerate dust. Clean your slides before

bringing them in and transport them in a clean box.

Cropping: Do you crop your slides to eliminate distracting elements

near the edge of a picture? That's good!

Do you crop your slides to level off tilted horizons? That's good!

Most judges hate sloping horizon lines.

Do you use masking tape or electrical tape to mask slides? That's BAD!

The tape could cause the projector to jam.

Do you mask from one side or the other only so that the slide projects

off center on the screen? That's not good; it's distracting.

Ask Class AA members the best methods of cropping.

They will probably recommend mounting in glass, which will prevent

scratches and fingerprints on your slides, features that disturb

the judges.

COMPOSITION

Does your slide have a center of interest or focal point? It should to

be competitive.

Is the center of interest dead in the center of the picture?

That lessens the interest and impact. Cropping can let you move

the center of interest off center as in "Rule of Thirds".

Do you crop your rectangular slide down to a square? The square is

an uninteresting shape. Avoid it.

Do you fill the frame? No unnecessary empty space?

Do you use only the horizontal format? Some subject matter is inherently

vertical and almost demands a vertical format.

Do you bisect the picture area with the horizon line? Not a great idea

usually. Back to the "Rule of Thirds".

COLOR

Is your slide monochromatic? By definition color film deserves colorful

images.

Do you have a color scheme? Complementary colors such as blue and gold

work well.

Is your color vibrant? If not the slide could be overexposed.

A polarizing filter usually adds vibrancy to slide colors.

INTEREST

Does your slide have "universal" interest? Something everybody wants to

look at?

Don't just copy. Add something of yourself.

You don't want a snapshot or even a postcard... and neither does the judge.

Start looking more often through the viewfinder and do use the depth of field

preview if your camera has one.

NWCCC NEW POINT SYSTEM FOR JUDGING SLIDES

In order to bring uniformity into the scoring system used for slide competitions, the NWCCC recently adopted a 3-9 point spread for assessing the value of slides. This system has merit and our board has recommended it for use at the internal competitions held here. With the usual three judges using this system, the possible total points could vary from 9 to 27. Similarly, one judge would award all points, simply by assessing the 3-9 spread, then multiplying by three.

Value	Evaluation Principle
3 points	Significant technical deficiencies (e.g., exposure, focus, composition, etc.)
4 points	Generally weak and/or poorly presented.
5 points	Some technical deficiencies: not showing any particular skill of the photographer.
6 points	Average: some demonstration of the photographer's use of good technique and recognition of an interesting subject.
7 points	Fairly strong in technique and interest; worthy of being accepted.
8 points	Well balanced; strong interest, composition and technique.
9 points	Exceptionally good; high in interest, composition, technique and impact.

HORIZONTAL OR VERTICAL?

How do we choose whether to use a vertical or horizontal format? The fact is, most amateur photographers use the horizontal position. Why? Is it because this is the way the camera seems to be in a correct position? Is it easier to use the camera when horizontal? Perhaps we just don't think about holding the camera in a vertical position. Before releasing the shutter, try looking through your lens in both positions to see which format is most pleasing.

Some photographers naturally prefer one format. They shoot their photos this way the majority of the time forgetting to even look at the other option. As individuals we use what pleases our eye and gives us a sense of satisfaction. We format the photo the way we wish to see it. The way that makes us feel good when we view it.

As photographers, we need to use both vertical and horizontal format. The decision is based on our feelings and emotions about the subject. We want to give strength to the idea we are trying to create.

The next time you take some photos, try both vertical and horizontal. Use them to enhance and strengthen the image you see in the viewfinder.

CRITIQUE BY FRANS ALKAMADE

Frans Alkamade has agreed to provide a critique of our slides at the July meeting. Frans is a newcomer to the Puget Sound area and is a member of Printmaker's Critique and Seattle Photographic. He is a master print maker. Frans was twice president of the Santa Clara Camera Club in California and was President of the Central Coast of California Council of Camera Clubs. Frans now lives in Mukilteo and is Program Chairman for the NWCCC Conference.

1995 **P.S.A. Competition Results**
by Howard C. Hansen

International Club Slide Competition

The April results from this competition have been received and show that the Pilchuck Camera Club received a total of 64 points and finished the season in a tie for 6th place in the "D" group, two points from fifth which would have moved us into the next higher group. The results of this judging, which was hosted by the Mount Baker Camera club of Mount Vernon, Washington, are as follows:

Winter Sky	by Norm Jensen	9 Points
Lamp Lighter	by Norland King	9 Points
Rainbow of Colors	by Janet Rapelje	9 Points
Fidalgo Strait	by Norm Jensen	10 Points
Artist in the Park	by Donald Rapelje	12 Points
Teton Barn	by Jim Geniesse	14 Points

Donald Rapelje's slide "Artist in the Park" was awarded an "Honorable Mention" ribbon and Jim Geniesse's slide "Teton Barn" received an "Award of Merit" ribbon. Congratulations!

Because of Jim's "Award of Merit" ribbon, his slide was entered in the "Slide of the Year" competition which was held in June. Nothing has been received as to the results of this competition as of this writing.

Color Slide Competition for Clubs - Nature Division

The results from the May competition have been received and show that the Pilchuck Camera Club received a total of 60 points from this competition, has a total of 165 points and tied for 22nd place out of 31 clubs for the season. This judging was hosted by the Flatirons Foto Club of Boulder, Colorado with the following results:

Alert Cheetah	by Jim Geniesse	9 Points
Dark Eyed Junco	by Janet Rapelje	9 Points
Grey Kangaroo	by Suzanne Ladd	10 Points
Rufous Hummingbird	by Janet Rapelje	10 Points
Parrot	by Suzanne Ladd	11 Points
Kookaburra	by Stan Parmeter	11 Points

1995 INTERNATIONAL CHALLENGE

Winners in the Regional Judging were:
1st Place - Len Edvinson
2nd Place - Jim Geniesse
3rd Place - Anne Seager

GREAT WORKSHOP!

The second successful photography workshop was held at Norm and Harriet Jensens mobile park club house. Helpful instructions and hints were exchanged throughout the day. Great demonstrations were given by:

Sherman Bronsirk...mat cutting
Norland King...night photography
Janet Rapelje...care of slides
Anna Sebring...lens and tripods
Jim Geniesse...set ups for indoor lighting.
What a day! "Thanks" to club members who filled this workshop with such HELPFUL information. Sorry you missed it. The potluck was great too.



Workshop July 29, 1995

Norland. Hints on how to take successful night shots.

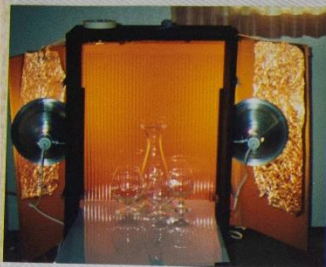


Sherman, showing mat cutting accessories & techniques.



Fran got into the picture.

Jim. Indoor photography can be fun. Use your imagination.



Janet, with ideas on the care of your slides, cleaning & re-mounting.



Norm Jensen picking up slide information.



Anna, making use of your lens. Matro hints etc.

ANNA says "come on take a look and see what you can do with a cardboard cylinder."

POTLUCK WORKSHOP

The July 29 workshop and potluck was enjoyed by all who attended. It seems we never know all there is to know about photography and with a small group attending, there was time to answer all questions and learn some new techniques. The food was delicious and it was a very satisfying day.

Barbara Wagner



Don Rapelje



Norland, Sherman, Anna a bit of Steve

THE PILCHUCKER

PILCHUCK CAMERA CLUB NEWSLETTER

VOLUME 27

JULY 1995

NUMBER 10



"SPRAY FALLS"
by PHILLIP JACOBSON

SPECIAL EDITION OF THE PILCHUCKER

JUNE

1995

JUNE 25, 1995, PHILIP JACOBSON CELEBRATES HIS 100TH BIRTHDAY.

PHILIP JACOBSON was born in Spokane, Washington June 24, 1895.

In the summer of 1898, his family, consisting of Philip, his father, mother and two brothers, left Spokane, in a covered wagon. They were heading to Coquille, Oregon. When they arrived at Pendleton, Oregon, Philip saw many Indians, never before had he seen so many. From Pendleton they traveled down to Heppner, The Dalles, and followed the Columbia River to Portland, south to the Grants Pass area then to Coquille, the county seat to Coos County.

His father built a house here, although they didn't stay long. Their next move

was to North Bend where they lived in a frame tent with a "fly" on top. His father went on to Klamath Falls where he started a building moving business. Mother and boys boarded the S.S. Alliance for Portland and from there they took the train to Ashland, where their father met them with a team and covered wagon. It was a rough riding sixty miles to Klamath Falls as there were no pavements.

In the winter of 1908 Philip went down to Picard to help his father with the moving of buildings to Doris. This was a job of taking down many barbed wire fences and putting them back up when they were through, as they crossed three miles of homesteader's land. These buildings were "skidded" on skids and pulled by cable with a one horse capstan. As the horse went round and round the building was moved a short distance at a time.

In 1909 his father took up a homestead of 160 acres on Philip Jacobson.

See this month's front cover for one of Philip's photos titled, "Spray Falls", taken in Mt. Hood National Park.

Sheep Mountain S.E. of Doris, Oregon. This was coyote, rattlesnake and Jack rabbit country. At this homestead mother did most of the cooking over a large rock fireplace. His brothers remained in Klamath Falls and continued going to high school. Philip was needed on the farm.

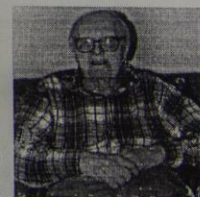
In 1990 about all that was left of Picard was a very nice cemetery and tombstones of many early pioneers, including Philip's folks.

VIGNETTE OF PHILIP JACOBSON

In the spring of 1914, after planting grain and spuds, he went back to Klamath Falls. He worked in a box factory, earning \$2.00 a day. From these wages he

had to pay \$1.00 a day for room and board. He soon quit this job and hiked out to Klamath valley, where he got a job on a hay ranch driving a team of horses at \$2.00 a day, plus food. He slept in the barn. In November he took a job logging in the snow at the upper end of Klamath Lake at Odessa. They were transported, with horses, logging gear and grub for the winter, on a lake boat to the logging area. It was one long, cold winter. In

the spring he went home to do the plowing and planting of spuds.



PHILIP JACOBSON

In the spring of 1915 he boarded the S.S. Mariposa for Seward, Alaska. The cost of this trip was \$25.00 in steerage where he received minimal accommodations. The next day he and a man he had met on the boat, started hiking the Seward Iditarod Mail Trail, heading to Knik Anchorage, 130 miles away. This trail was built about 1905. They made it to Bear Lake the first day, where he caught some fine trout. They were so good he had to go back and catch some more. Along the trail there were

many porcupine. They had to cross several snow creeks and glaciers. After crossing the pass they left the Iditarod Mail Trail and headed S.W. to Knik Anchorage. After six days travel they arrived at their destination, Knik Anchorage, a city of tents and Yukon stoves, no locks and no thieves. After getting a 7 X 9' tent, a Yukon stove and cooking gear, he got a job as a longshoreman deck hand on several tug boats that were picking up railroad ties. He worked one winter at Seward and Cordova.

In 1914 Congress put up 42 million dollars to build a railroad from Seward to Fairbanks, Alaska, some 400 miles. Some of the officers were from the building of the Panama Canal. They with other engineers made up the Alaska Engineering Commission.

World War I took him to Fort Lewis where was to be drafted into the service of his country. He was rejected because of his heart condition. Hundreds of draftees passed away from the flu.

Over to Yakima, Washington then back to Anchorage, Alaska, working as a longshoreman.

In 1918 he made a trip around the U.S. in railroad freight cars. He bought tickets only for daylight travel. These he bought day to day. They were cutting ice in Minnesota and Michigan that they used for refrigeration. He got the flu in New York and was laid up for three days. From Washington, D.C. he continued to Philadelphia, where he got a room. He had to get up at 4:00 a.m., as the bed bugs were eating him up. He traveled to New Orleans in the spring of 1919. Here he was introduced to segregation. Stops were made in San Francisco, Los Angeles and then back to Seattle. He had \$3.25 left in his pocket from the original \$1,000 he began with.

In 1923 he returned to Seattle where he continued longshoring for 37 years. He met Lorraine Broun, a German girl, in a dance hall. He remembers several dance halls including "The Lonesome Club", "The Pastime Club", and the "Eagles" and the "Elks". He had to learn

In 1924 he bought a Chevy Sports Touring car with four doors and two seats. It had a lock on the steering wheel. He never saw another one like it. This was a method to eliminate car thieves. You needed a key to unlock the steering wheel and to start the car.

He and Lorraine Broun, with two other couples were married the same night in March 1927. It was almost midnight before all of the services were over with and they were able to leave the parties for their honeymoon in Vancouver, Canada.

He built a house on Beacon Hill in Seattle, where they lived for two years. Their second home was on a stump ranch at Alderwood Manor. For fifteen years they raised silver foxes (several shades) and mink. They had as many as 165 foxes and between 600 to 800 mink.



PHILIP RECEIVES LIFETIME MEMBERSHIP IN THE PILCHUCK CAMERA CLUB, FROM FRAN TRELEVEN

the Pilchuck Camera Club. He joined the club July 25, 1968.

They moved into the Norse Home in Seattle in 1972 due to Lorraine's failing health. She passed away in 1974.



Philip put on several slide programs for the club. He used a Bolex camera for many years. Now he uses a Contarex camera which was made in Germany. He says it is a very good camera. He takes pictures of all the programs that are put on at the home.

'SPRAY FALLS'
by PHILLIP JACOBSON

Pilchuck Camera Club members plan to attend Phil's 100th birthday celebration on June 25, 1995 at Norse Home on Phinney Avenue across from Seattle's Woodland Park Zoo. Parking is available only on the street.



PHILIP JACOBSON'S 100TH BIRTHDAY

What a birthday party it was! There was quite a crowd gathered to help Philip celebrate his day. Even some friends and family from Denmark and Michigan were in attendance. Music was provided by the organ, a banjo and a guitar. Vocalists sang some of Philip's favorite songs and some good old time reminiscing was included. Among the many gifts and cards received Philip was honored with a birthday greeting from President and Hillary Clinton.

Sitting at the head table, dressed in a suit and tie, and wearing a bright red boutonniere, Philip made a handsome picture while he cut his beautiful cake like he may have done it a time or two before.

Enjoy your 100th year Phil and keep your camera active.

Thank you Anna Sebring for getting together the information for the vignette of Philip Jacobson.

See this month's front cover for one of Phil's photos titled, "Spray Falls", taken in Mt. Rainier National Park.

THE PILCHUCKER

AUGUST 1995



"NURSING TWINS"
by DON RAPELJE

Field Trip to Sauk Mountain

Up Up Up TO THE TOP

At 6:30 AM, on July 15th, 1995, eight members of the Pilchuck Camera Club and one guest met at the 116th street Park & Ride lot in Marysville to begin the trip to Sauk Mountain and the ascent to the top. Four intrepid explorers made the summit, cameras in hand. The day was sunny, bright and warm. Many varieties of wild flowers were in evidence from the trail head to near the summit. Along the trail to the top, our hardy explorers were entertained by the antics of Marmots and birds. The view was spectacular. Mount Baker to the north, Glacier peak to the east, the whole Skagit and Sauk valleys spread out below. And just below the peak, a jewel of emerald green greeted the gaze of the explorers, Sauk lake. For those who declined the lure of conquest, the area surrounding the trail head provided many opportunities for wild flower photography. All members who participated should have an abundant number of images to enter in the Violet Johnson Wild Flower competition this year. The competition should be fierce.

Upon returning to the trail head, the hardy explorers were treated to cold watermelon and wings.

by Steve Lightle

FROM OUR NEW PRESIDENT



My first duty as President and I can't get it going--my attempts at writing this column have not been good. I hope it gets easier!!

Thank you all for your nomination and votes of confidence by electing me as your new President. Steve Lightle did a great job as President and on behalf of the club I would like to extend a big THANK YOU to Steve. Now let's see what an Aussie can do!

Being associated with this elite group of photographers has been a learning and extremely fun experience over the last few years. I would like to see that continue so let's do more workshops and field trips like the last one on the 29th of September. The day started with rain, so as we drove east we met the sun and warmth. The fall colours were brilliant, and it turned out to be a beautiful day. It's too bad all of you weren't there to see it. But most of all what we should do with this great club of ours is have FUN while learning. Trust me this I do know how to do. Keep your cameras clicking.

Suzanne Ladd, President

Frans Jakamade did a fine job in his critique of our July competition slides. Thank you Frans.

FALL COLOR

September is the month to photograph the fall colors. A field trip to the Lake Wenatchee area is being considered and will be discussed at the September 14 meeting. Remember to look for color in water reflections where you get quite a different perspective. Try taking a small portion of water, a waterfall, or a pool that is reflecting gold or red from color surrounding the area. As you look through your lens, check out each part of a stream to find the most interesting compositions.

Use a warming filter to enhance the colors of fall making them more saturated. Try photographing fall color in the rain or on a cloudy day and you'll be surprised at how beautiful the colors are. Enjoy yourself and let nature overwhelm you.

M, N, O, P, Q, AND R

These are the letters for the current quarterly assigned subject. September is the last month in this quarter so check to see which letters you haven't found a photo for and get those images made.

September
Refreshments

Suzanne Ladd
Janet Rapelje



You're on the right track if you can entertain an idea, entertain another person, and entertain yourself.

EVALUATIONS

September 14, 1995		
"Heceta Light House"	Dennis Aley	26 1st
"St. Andrews"	Suzanne Ladd	25 2nd
"Two Bighorn Rams"	Jim Geniesse	25 3rd
"Peggy's Cove"	Jim Geniesse	25 1HM
"Lady Slipper"	Jim Geniesse	24 1HM
"Flaming Red"	Don Rapelje	24 1HM
"Twilight Thrills"	Norland King	24 1HM
"Iguana"	Anna Sebring	21
"Phant"	Dennis Aley	22
"Snak Mt. Trail"	Janet Rapelje	21
"Diablo Dam"	Ron McInnes	21
"Joseph's Coat"	Don Rapelje	22
"Magenta Velvet"	Anna Sebring	20
"Bear Cat"	Dennis Aley	20
"Deception Falls"	Janet Rapelje	21
"Block Head"	Ron McInnes	20
"Goldskin Scatecap"	Anna Sebring	21
"Troublesome Creek"	Janet Rapelje	20
"Davis Powerhouse"	Ron McInnes	22
"Among the Dahlias"	Don Rapelje	21
"Where Are You Mr. Photographer"	Steve Lightle	23
"Frosted Leaves"	Stan Parmeter	18
"Canoe Trip"	Norland King	23
"Wildflowers"	Steve Lightle	22
"Ol' Wooden Face"	Norland King	21
"Ross Dam"	Suzanne Ladd	23
"Alder and Blue"	Suzanne Ladd	21

Judges: Sherman Bronsink, Suzanne Ladd, Don Rapelje Alternate:
Ted Treleven
Tabulation: Anna Sebring
Projection: Ron McInnes

NATURE

"Angel Wings"	Anna Sebring	7
"Lioness on the Prowl"	Jim Geniesse	9
"Bull Thistle"	Janet Rapelje	3
"Bald Headed Photo Snapper"	Sherman Bronsink	-
"Thistle"	Barbara Wagner	1
"Rought Legged Hawk"	Don Rapelje	14
"Fungi"	Suzanne Ladd	0
"Tortoise"	Stan Parmeter	11
"Barrel Cactus"	Anna Sebring	11
"Prickley Stems"	Ron McInnes	0
"Nursing Twins"	Don Rapelje	16
"Watching"	Stan Parmeter	4
"Veil of Water"	Suzanne Ladd	0
"Artist's Conk"	Janet Rapelje	0
"Bird Bath"	Ron McInnes	0
"Choylla Cactus"	Stan Parmeter	1
"Marmot"	Janet Rapelje	2
"Swamp Beauty"	Anna Sebring	0
"At the Top"	Suzanne Ladd	5
"Gorge Falls"	Ron McInnes	0
"Old & New Growth"	Don Rapelje	6

September 1995

Pitchuck Camera Cl

1994 - 1995 Officers

President - Suzanne Ladd
c/o Kite Camera
Everett WA
Tele: (206) 353-1022

Vice-President - Janet Rapelje
13427 34 Ave NW
Marysville WA 98271
Tele: (360) 652-6623

Secretary - Dennis Aley
P9 77 PL SW
Everett WA 98203
Tele: (206) 353-7376

Treasurer - Ethel Geniesse
504 View Ridge Dr
Everett WA 98203
Tele: (206) 259-2869

Standing Committee Chairmen

Membership - Ethel Geniesse

Tele: (206) 259-2869

Social - Anna Sebring

Tele: (206) 337-0187

Publicity - Stan Parmeter

Tele: (360) 652-7756

Sunshine - Anna Sebring

Tele: (206) 334-3370

PSA Rep. - Howard Hansen

Tele: (360) 652-6623

Field Trips - Donald Rapelje

Tele: (360) 652-6623

Historian - Harriett Jensen

Tele: (360) 652-6623

Slide Registration-Projection

Ron McInnes Tele: (206) 334-4861

Slide Records - Jim Geniesse

Tele: (206) 259-2869

NWCCC Rep. - Suzanne Ladd

Tele: (206) 337-0187

Pitchucker Committee

Janet Rapelje, Editor

Tele: (360) 652-6623

Tom Clemens, Assistant

Tele: (206) 338-0503

Dennis Aley, Assistant

Tele: (206) 353-7376

Anna Sebring, Consultant

Tele: (206) 334-3370

20th of each month.

Pitchucker deadline

KINGS TABLE BUFFET

Club members wishing to join in the before meeting dinner please note we are changing back to **KING'S TABLE BUFFET, 3802 Broadway in Everett**. Each month several members meet for dinner at a local restaurant before the monthly meeting. All members are welcome and it's fun to share this time together. Join us in September! We meet at about 5:30 P.M.



CLUB OFFICERS - 95' - 96'

Dennis Aley, Ethel Geniesse, Suzanne Ladd
Janet Rapelje

Too often we underestimate the power of a touch, a smile, a kind word, a listening ear, an honest compliment, or the smallest act of caring, all of which have the potential to turn a life around.

Leo Buscaglia

SEPTEMBER MEETING MINUTES

Pilchuck Camera Club
Minutes of Regular Meeting
September 14, 1995

The meeting was called to order by President Steve Lightle at 7:07 p.m. with 14 members present. The three guests present were Tim Clemans, Jordon Lightle, and Steve Winters.

Vice President, Fran Treleven, presented the certificates for the winners of the August competition.

The election of officers was quick and to the point. Suzanne Ladd was elected as our new president. Other officers elected are Janet Rapelje, Vice President; Ethel Geniesse, Treasurer; and Dennis Aley, Secretary. Anna Sebring was appointed as the new Social Chairperson. Frieda Mercer agreed to audit the club's books when Treasurer, Jim Geniesse returns from his trip.

A report from Vice President Fran Treleven informed the club that the rent for our meeting room may now be paid directly to the Housing Authority. No receipt will be issued and our cancelled check will be our only record of payment.

Anna Sebring, Sunshine Chair, reported that long time Pilchuck Camera Club member, Clayton Knittel had passed away. Anna had also had cataract surgery on her eye and is recovering nicely.

Howard Hansen, PSA Representative, report the Traveling 1994-95 Set of slides will be shown on April 11, 1996. Suzanne Ladd, NWCCC Representative, reported on the upcoming Conference on November 3, 4, and 5. Suzanne also reminded members of the Abbotsford Photo Arts workshop on October 21, 1995.

HAMBURGERS, HOTDOGS, AND SOFT DRINKS are scheduled at Sherman Bronsink's home at 2203 Utter Street, Bellingham, WA on Saturday, September 23, 1995. Phone (360) 733-5765 for further information.

A field trip is planned for the Lake Wenatchee, Chiwawa River area on September 29. Leave at 6:00 a.m.

There are 27 slides in the regular competition and 21 in the Nature competition. Judges will be Sherman Bronsink, Suzanne Ladd, Don Rapelje,

CLUB JUDGING

At the monthly competitions, three judges and an alternate are chosen by the Program Director to judge that evening's entries. Each judge may score a slide from one to ten. The alternate also votes on each slide. If a judge or his spouse has a slide in competition, he will place an X on his ballot, in which case the tabulator will count the ballot of the alternate, who is given a different colored pen.

In the Nature competitions, all members are allowed to vote on six slides. These scores do not count toward the Achievement Award certificates awarded at the annual banquet.

ACHIEVEMENT AWARDS

Scores earned in the regular monthly competitions are registered and those scores of 20 points and above count toward the Achievement Awards Certificates. The Certificates are awarded at the annual Slide of the Year Banquet to those members who have earned points during the competitions. A certificate is given for each 500 points up to 2000. After 2000, a certificate is given for each 1000 points earned. A Certificate of Merit is awarded to the three top point achievers each year.

and Ted Treleven as alternate. Ron McInnes will do the projection and Anna Sebring will tabulate.

The program this evening will be "WATER MOODS." This is the Interclub Slide Show entered in the NWCCC competition for 1995.

No board meeting will be held in September. Meeting adjourned at 7:40 p.m.

Janet Rapelje
Secretary, Pr. Tem

THE PILCHUCKER

SEPTEMBER 1995



"DIABLO DAM"
by SUZANNE LADD

ROSS DAM FIELD TRIP

A good turnout for the Ross Dam trip included Tom, Debbie and Tim Clemans; Jim and Ethel Geniesse; Norm Jensen; Suzanne and Harry Ladd; Ron McInnes; Don and Janet Rapelje; Anna Sebring; Barbara and Richard Wagner; and friends of the Rapeljes, Herman and Bev Kehm. Harriett Jensen had a tooth pulled and was unable to attend.

This was an interesting trip. There was a slide presentation, then the trip up the tram and a short walk to Diablo Lake. Here we boarded the Alice Ross III for the ride up Diablo Lake to the base of Ross Dam and the Ross Dam Powerhouse. For those wishing to participate there was a guided tour through the powerhouse. After the tour and time for photos, we again boarded the Alice Ross III for the ride back down the lake. After returning to Diablo we enjoyed a wonderful all-you-can-eat home-style meal. This was a great day with beautiful scenery and all who attended seemed to have a good time.



WELCOME

Fran Chappell
1717 Rockefeller
Everett WA 98201
Phone (206) 303-8246

The Fran is from Beaverton Oregon and has been working with photography for many years. We are happy to have Fran in our club and are looking forward to seeing some of her work.

NEW MEMBERS

Two new members have joined the club and we want to welcome them to our group. Their names are:

Robert Patrick 7510 29th Ave NW Seattle WA 98117-4617 Tele: (206) 789-2042	Steve Winters 927 Quinn Ave Marysville WA 98270 Tele: (360) 659-8506
---	---

Welcome Robert and Steve



EDITOR'S CORNER

A big welcome to our new members; *Dennis Aley, Idella Lewis, and Eric Olson*. The club needs to know what your interests are and what you would like to gain from club membership. Don't hesitate to let the members know what you want. Prints? There seem to be several members who do black and white prints. The club would welcome a print display at the club meetings. Black and white or color prints could be on the agenda for an upcoming critique session. Are there special areas of interest that you would like to see a program or workshop on?

PILCHUCK CAMERA CLUB

The Pilchucker, edited by
Janet Rapelje

NEW MEMBER:

Fran Chappell from
Beaverton, Oregon
Peggy Lynn of Lake Stevens

Pilchuck members have added a friendly pre-meeting special. They are meeting at the Kings Table for a **before**.

A BIT OF PAST HISTORY

The Everett Daily Herald
Tuesday, Sept. 7, 1965

RAINY DAY PHOTO IDEAS ON THE PROGRAM

The Pilchuck Camera Club will meet Thursday evening at 7:30 p.m. in Memorial Hall, Legion Park.

Following the business meeting there will be a 35 minute illustrated lecture entitled "What To Do Until The Sun Shines." This is the Photographic Society of America lecture by Fred and Trudy Unverhau, which proved to be the most popular program at the Chicago Convention. It deals with creative photography at its best - right in your own home - using simple subject to be found anywhere. This will offer an opportunity to find inspiration and ideas for keeping occupied with photography all winter long.

As an added education feature, Tom Townsend from Disco Camera Shop will give a talk and demonstration on telephoto lenses and Telxtenders. He will take equipment from his shop to work with and for examination. This will be followed by a question and answer period.

Anyone interested in color slide photography is invited to attend the meetings of the club.

What a change!! Thirty years ago The Herald covered all community events no matter how small.

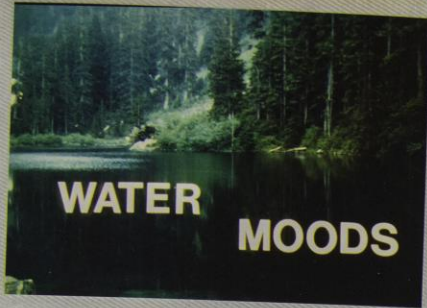
PHOTO FOCUS

The Coupeville Arts Center has announced the following faculty for Photo Focus, April through September 1996 on Whidbey Island, WA: Ruth Bernhard, Michael Kenna, Annie Griffiths Belt, William Neill, Kurt Fishback, Bryan Peterson, Martha Casanave, William Laven, Gary Braasch, and Doug Wilson.

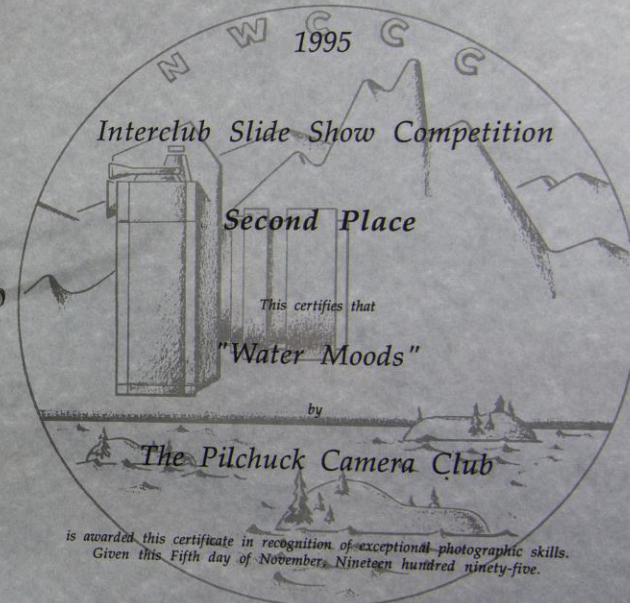
On location workshops will be held in the North Cascades and darkroom of Bruce Barnbaum; Olympic Peninsula with Pat O'Hara; 5 days on Mt. Rainier with David Hiser; and the Oregon coast with David Middleton. For more information contact the Coupeville Arts Center, PO Box 171, Coupeville, WA 98239 (360)678-3396 FAX (360)678-7420 or cac@whidbey.net

PR

The



Northwest Council of Camera Clubs



is awarded this certificate in recognition of exceptional photographic skills.
Given this Fifth day of November, Ninetegn hundred ninety-five.

Slide Division Director

W. E. Glock

President

John J. J. J. J.

PR

The

P.S.A. Competition Results

by Howard C. Hansen

International Club Slide Competition

Jim Geniesse Earns Gold Medal

The results from the annual International Club Slide Competition "Slide of the Year" judging have finally been received with the notification that Jim's slide "Teton Barn" has been awarded a **Gold Medal**. This medal and the "Award of Merit" ribbon were presented to Jim at the September meeting. Jim is the third member of the club to have this honor bestowed upon him. The others being the late Clayton Knittel and Sherman Bronsink. Congratulations Jim!!!

The October 1995 judging results, judged by the Shasta Camera Club of Palo Dedro, California, have been received with the following results:

Heceta Light House	by Dennis Aley	7 Points
Sandstone Forms	by Jim Geniesse	9 Points
Fall at Mt. Rainier	by Jim Geniesse	10 Points
Hawk	by Donald Rapelje	12 Points
St. Andrews	by Suzanne Ladd	12 Points
Twilight Thrills	by Norland King	13 Points

The total of 63 points places the club in a tie for 9th place with the Puget Sound Camera Club. Only 17 clubs have entered the "D" group for this season. The December judging will be held by the Suffolk Camera Club of Islandia, New York.

Color Slide Competition for Clubs - Nature Division

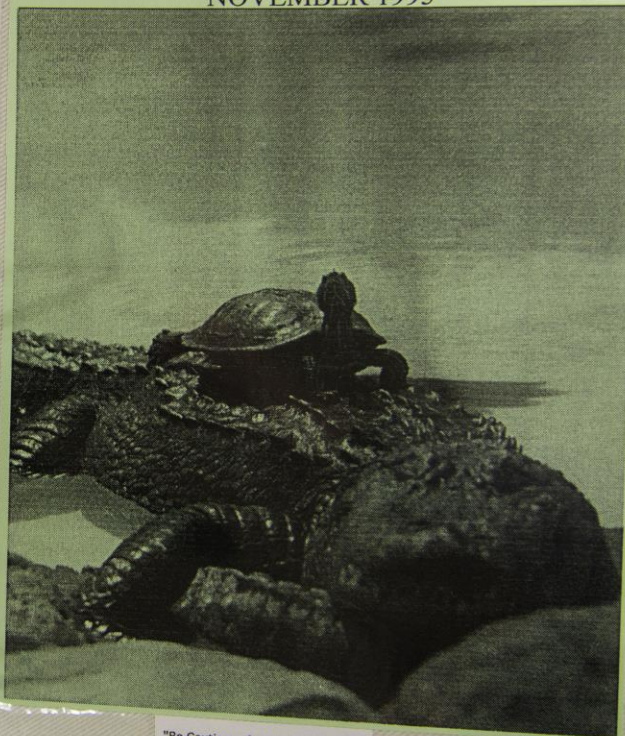
The results from the October competition have been received and show that the Pilchuck Camera Club received a total of 59 points. This judging was hosted by the f:67 Camera Club of Bremerton, Washington with the following results:

At the Top	by Suzanne Ladd	7 Points
Lioness On the Prowl	by Jim Geniesse	9 Points
Rough Legged Hawk	by Donald Rapelje	10 Points
Angel Wings	by Anna Sebring	10 Points
Barrel Cactus	by Anna Sebring	10 Points
Nursing Twins	by Donald Rapelje	13 Points

The composite results have not been received as of this writing but it has been indicated that Donald Rapelje's slide "Nursing Twins" will be receiving an "Award of Merit" ribbon. Congratulations Don!!!

THE PILCHUCKER

NOVEMBER 1995



"Be Cautious of a Free Ride"
by DENNIS ALEY

WOW!!
Look at our club
winners!

1995 NWCCC CONFERENCE
November 3, 4, & 5
ALDERBROOK RESORT
E. 7110 Hwy 106
Union, Washington

**1995
NWCCC CONFERENCE WINNERS FROM PILCHUCK CAMERA CLUB**

INTERCLUB SLIDE SHOW COMPETITION

Pilchuck Camera Club "WATER MOODS" 2nd Place

SMALL MONOCHROME PRINT COMPETITION

Sherman Bronsink "Getaway Car" 3rd Place
Sherman Bronsink "B52S" Honorable Mention

TRAVELING SLIDE SALON

Jim Geniesse "Tangerine Rose" Honorable Mention

QUARTERLY SLIDE COMPETITION

1st Quarter

Jim Geniesse "On the Prowl" Honorable Mention
Jim Geniesse "Sunbeam in Corkscrew" Honorable Mention

2nd Quarter

Jim Geniesse "Elegant Swans" Honorable Mention
Jim Geniesse "Royal Guard" Honorable Mention
Janet Rapelje "Colorful Glassware" Honorable Mention

3rd Quarter

Jim Geniesse "Sandstone Swirls" Honorable Mention
Jim Geniesse "Bighorn Ewe & Lamb" Honorable Mention
Jim Geniesse "Teton Fencing" Honorable Mention
Jim Geniesse "Winter Wonderland" Honorable Mention

FINAL QUARTER

Janet Rapelje "Colorful Glassware" Third Place
Jim Geniesse "Sandstone Swirls" Honorable Mention
Jim Geniesse "Teton Fencing" Honorable Mention

ALDERBROOK 1995 CONFERENCE PROGRAM

SALON CHAIRMEN

MARGARET VANESS - SLIDE DIRECTOR
MARGARET VANESS - Creative Color Slide Salon
CAROL COHEN - Interclub Slide Shows
JEAN TIMMERMEISTER & HOWARD RIX
Mini Slide Shows
JANET RAPELJE & ANNA SEBRING
Traveling Slide Salon
CHARLES CLARIDGE - Quarterly Slide Competition

CAROL COHEN - People's Choice Competition

BRUCE CLIFTON - PRINT DIRECTOR

ALAN MOODIE - Large Print Salons

STEVEN FISHER - Small Print Salons

BRUCE CLIFTON - Traveling Print Salons

BILL & MARGE BIEDEL
NWCCC Representatives on
"The International Challenge"

NEWSLETTER STAFF

LOREN FREEMAN, Editor
BRUCE CLIFTON, Associate Editor
DONNA BUTLER, Associate Editor
JEAN TIMMERMEISTER, Associate Editor
OLYMPIA CAMERA CLUB, Distribution

NEW OFFICERS FOR NWCCC

1995
President Bruce Cozens
Vice Pres. Ken Johnson
Secretary Jim Martin
Treasurer Eugene Collias



NEW MEMBERS

Two new members have joined the club and we want to welcome them to our group. Their names are:

Robert Patrick 7510 29th Ave NW Seattle WA 98117-4617 Tele: (206) 789-2042	Steve Winters 927 Quinn Ave Marysville WA 98270 Tele: (360) 659-8506
---	---

Welcome Robert and Steve

PSA INTERNATIONAL BULLETIN CONTEST

The "Pilchucker" edited by Janet Rapelje and assistants Tom Clemans and Dennis Aley placed 5th out of 76 entries and received an Honor Award in the Small Club category for the 1995 competition.

Other entries winning recognition for our area are: "Arthur P. Hendricks, Jr. Memorial Award" for the Best of Entries awarded to the PSA Puget Sound Chapter "Puget Sound Off" edited by Pat Egaas. Congratulations Pat! Council category 1st Place winner was the Northwest Council Of Camera Clubs Newsletter edited by Loren Freeman. In the Small Club Category Bellevue and Eastside Camera Club edited by Douglas A. Moore received an Honorable Mention. In the Large Club Category, Tacoma Photographic Society edited by Gary R. Cannel received a 2nd Place, an Honor Award went to Puget Sound Camera Club edited by Charles Claridge, and f67 Camera Club edited by Dr. C.W. Biedel received an Honorable Mention. Congratulations to all the winners and their assistants who work hard to produce attractive and informative newsletters.

Small Club

Honor Award - **Pilchucker**, Pilchuck Camera Club, **Janet Rapelje**, Editor
Honorable Mention - **FORMAT**, /Bellevue/
Eastside Camera Club, Editor: **Douglas A. Moore**

NWCCC NEW POINT SYSTEM FOR JUDGING SLIDES

In order to bring uniformity into the scoring system used for slide competitions, the NWCCC recently adopted a 3-9 point spread for assessing the value of slides. This system has merit and our board has recommended it for use at the internal competitions held here. With the usual three judges using this system, the possible total points could vary from 9 to 27. Similarly, one judge would award all points, simply by assessing the 3-9 spread, then multiplying by three.

Value	Evaluation Principle
3 points	Significant technical deficiencies (e.g., exposure, focus, composition, etc.)
4 points	Generally weak and/or poorly presented.
5 points	Some technical deficiencies: not showing any particular skill of the photographer.
6 points	Average: some demonstration of the photographer's use of good technique and recognition of an interesting subject.
7 points	Fairly strong in technique and interest; worthy of being accepted.
8 points	Well balanced; strong interest, composition and technique.
9 points	Exceptionally good; high in interest, composition, technique and impact.

COMPUTER ENHANCING

If you want an exciting experience, take an old family photo that is torn and worn and make a trip to Bellingham to visit Sherman Bronsink. Sherman's expertise at renewing and enhancing photos was used on an old torn photo of my mother as a baby. The photo had holes in it, the corners were gone and it seemed unsalvageable. Within an hour the photo was renewed, I had three 5 x 7s of the image and the cost was very reasonable. Sherman has all the equipment to solve most any photo problem and if you ask, he may show you his darkroom, filing room, and his mat cutting room. Call him! (360)733-5765

A field trip is being planned for the Bellingham area to photograph some of the old architecture. Sherman's home is one of the most photogenic. Perhaps we could make it a potluck if Sherman would agree to let us stop at his place for lunch. The Editor



What a serious group!
Norm, Barb & Dick, Don
and Sherman seated.



Lucky people who visited with Sherman to experience his talents and workshop with Digital Photography. Shermans Historical Bellingham home is also a treat to see. What a remodeling task he has taken on. Sorry this is not the best picture.

PHOTO TIPS

Star Effect - You don't need a cross screen filter to gain the star effect. Using a wide angle lens and a small aperture will usually provide the sunburst without a filter. A 28mm wide angle to 16mm fish-eye gives the best results. Underexpose the sky from one to three stops of light to emphasize the sun. Remember each lens is different and will provide individual results.

Do not look directly into the sun area of your viewfinder. Severe eye damage could occur.

Vignetting wide-angle Lenses - Using filters and lens shades that are not designed for wide-angle lenses can cause vignetting. The result will be darkened corners on the image. Sometimes these dark corners do not show up in the viewfinder but will be very noticeable on your slide or print.

Do a test using all the filter lens combinations before going out to do some serious shooting. Photograph an item with a neutral color and use both wide open and stopped down apertures.

Field Notes - Keeping track of all the information you use when taking photos in the field is easy with a pocket size tape recorder. All the data necessities are at your fingertips. Identify your rolls of film by using a number. This will eliminate confusion and you will never again have to wonder just how you came up with that great shot. When your slides or prints are processed you will know

THOUGHTS ON PHOTOGRAPHY

How do you feel when you think about photography? Is it satisfying? Does it make you aware of things around you? Do you communicate what you see through your photos? Do not become restricted by type of film, rules, equipment, subject, or technical gibberish. Using your camera, show how you feel about a subject. Think about what made you decide to capture this subject on film. Let your feelings come through in your photographs in the way you see and enjoy your surroundings. Improve your ability to put on film what you see and the way you envision it. Why else would we want to be photographers? Above all else, have fun with your photography. Enjoy it!

COLD WEATHER TIPS

Before going out in the freezing weather, clean your tripod legs and locks and wipe them sparingly with light oil so they will not stick.

If your camera or light meter batteries are old, replace them. Batteries are weaker in cold weather than in warm weather.

Do not rely on your exposure meter to meter a snow scene directly, or you will overexpose. Instead, meter on a gray card or the palm of your hand held vertically. Use the gray card reading without compensation, but open up one f-stop if you meter on your hand.

Advance your film slowly. Advancing it rapidly in cold or otherwise dry air can give you lightning-like streaks on your film caused by generating static electricity.

Carry your camera under your coat to keep it as warm as possible.

Before going indoors from freezing temperatures with a cold camera, wrap it in a plastic bag and seal it with a twist tie. After you take it indoors, the moisture will condense on the inside of the bag instead of on the inside of the camera and lens.

by J.G. Archibald (As printed in the March 1983 Pilchucker.)

Silence is never more golden than when you hold it long enough to get all the facts before you speak.

STILL LIFE

Panning: Panning during the exposure calls for a bit of practice but will deliver some very unusual and interesting effects. Panning can be done with the lens focused at a fixed distance on a point where the subject is expected to cross, or you can vary the focus as the image moves. In either case, do your panning by moving the entire upper half of the body and keeping the elbows braced and the arms steady. Added impact can be achieved through the use of slow shutter speeds during the pan, rendering blurred impressionistic images. Panning conveys lateral speed. Open viewfinder cameras are best, but any kind can be used. The disadvantage of the SLR is the momentary mirror black-out during the exposure. As a rough guide for shooting your first blurred pan images, try 1/15 of a second for an auto moving at 30 mph and 1/30 of a second for one moving at 60 mph. You can get open type viewfinders for SLR's that fit in the flash shoe.

by JG Archibald

Hint: The 1996 assignment of the year is action (feeling of motion). The above may be something you want to try for this assignment.

Important decisions made at club meetings. **1995**

New business. President Suzanne brought up the business of Club Dues from the October Board Meeting. To increase the yearly dues to the Pilchuck Camera Club to \$20.00 per single member and \$30.00 per couple. There was a discussion, Jim Geniesse made the motion that the Board's recommended dues increase be adopted. It was seconded by Norm Jensen and voted on by the membership. The yes votes carried. All dues collected from this date forward shall be under the new dues structure. Note this does not effect those members (which was reported to be 100%) that have already paid for the year 1995-96.

Board meeting will be 14 of November at the Wagner's.

Meeting adjourned at 7:40 PM.

Dennis Aley, Secretary

The annual assigned subject for next year will be **ACTION**, the slide should have a feeling of **MOTION**. The quarterly assignment will be three slides per quarter that best depicts the theme of each of the three months in the quarter. Example for a theme is a holiday that falls within the month (Independence Day for July, etc.). Or whatever that month means to you.

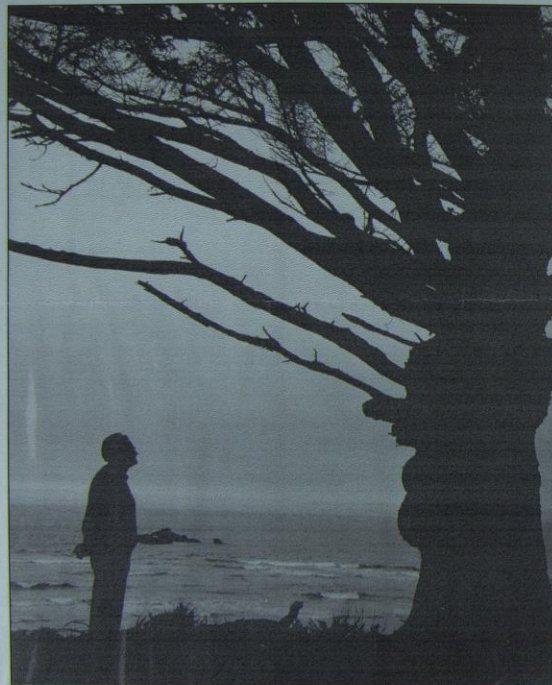
A change to the monthly awards wording in the membership booklet from three (3) Honorable mentions, to an approximate 10% of the number of submitted slides in a competition for Honorable Mentions. This comes about because of the increase in the number of slides submitted.

The meeting was brought to a close at 8:30 PM.

Dennis Aley, Secretary

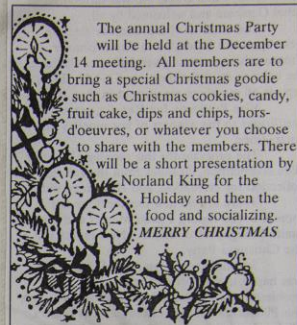
THE PILCHUCKER

DECEMBER 1995



"FACE TO FACE"
by ANNA SEBRING

CHRISTMAS PARTY



The annual Christmas Party will be held at the December 14 meeting. All members are to bring a special Christmas goodie such as Christmas cookies, candy, fruit cake, dips and chips, hors-d'oeuvres, or whatever you choose to share with the members. There will be a short presentation by Norland King for the Holiday and then the food and socializing.
MERRY CHRISTMAS

● PHOTO OPPORTUNITIES

Christmas Lights

December is the month to view and take photos of the Christmas lights and decorations. The Silver Lake area has the most beautiful lights to be seen. A night field trip is planned to photograph these scenes. The date and time will be decided at the December meeting.

December - Pt. Defiance, Tacoma ZooLights - Spectacular display. Open each evening from 5-9 p.m. during December, except December 24 and 25. (\$3 admission or \$2.50 in advance.) Phone (206) 591-5337.

Winter Scenes - There is snow in the mountains. A day trip to the higher elevations should provide some excellent winter scenes. Choose a day after fresh snow has fallen to capture the best photos. Take some children with you to get some happy faces at play. Watch out for the snowballs though!

QUARTERLY ASSIGNED SUBJECT

October, November and December

1995

"NIGHT SCENES"

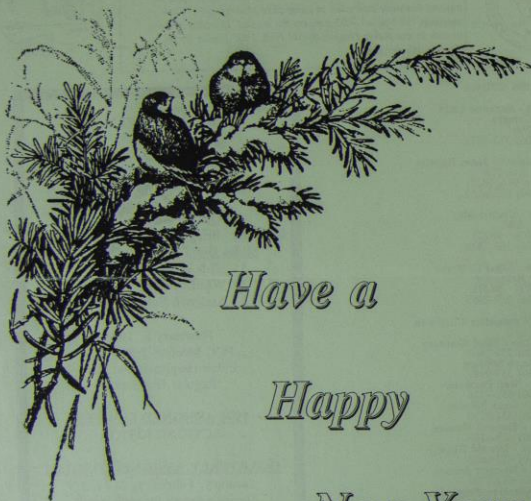
Join the field trip planned for Christmas lights.

NEW YEAR RESOLUTIONS

Let's all be thinking of some photographic resolutions we could make for the coming year. What could we resolve to do with our cameras or photographic talents during 1996? Is there a technique we have wanted to learn? Is there a set-up we haven't had the time or courage to tackle? Should we resolve to take more time for our photography? At the December meeting we will collect New Year's photo resolutions for the next Pilchucker.

THE PILCHUCKER

JANUARY 1996



*Have a
Happy
New Year*

PILCHUCK CAMERA CLUB NEWSLETTER

VOLUME 28
NUMBER 4



Join the Fun and
Fellow Photographers

PILCHUCK CAMERA CLUB 29th SLIDE OF THE YEAR BANQUET

February 24, 1996
HARVEY'S RESTAURANT
At the Airport in Snohomish

Social Hour 5:00
Dinner 6:00

Menu Choices and Price will be
announced at the January meeting.

Reservations and payment must
be received by February 16, 1995

For reservations or menu selections
call Ethel Geniesse after January 11.

Ethel Geniesse
504 View Ridge Dr
Everett WA 98203
(206) 259-2869

Pilchuck Camera Club will be
participating in the Interclub Slide
Show competition again this year.
If you would like to take part in
this competition, contact Suzanne.

SLIDES DUE AT JANUARY MEETING

- 3 - Slide of the Year Competition
- 3 - Wildflower Competition
- 3 - Assigned Subject "Churches"
- 2 - Traveling Slide Salon
- 4 - Slides for discussion/critique
- 3 - Slides for Regular Evaluation
- 3 - Slides for Nature Competition

PHOTOGRAPHIC NEW YEAR'S RESOLUTIONS

1. Read our camera manuals again.
2. Learn something new in photography..
3. Read the "Pilchucker".
4. Participate in club competitions.
5. Give yourself assignments to work on.
6. Organize all those slides.
7. Take both horizontal and vertical images.
8. Try some creative color slides.
9. Take some double exposures.
10. Enter competitions before the deadline.
11. Clean camera gear and gadget bag.
12. Shoot a self portrait.
13. Try shooting with a different lens.
14. Attend a workshop. ■

*Our business in life is not to get ahead of others,
but to get ahead of ourselves - to break our own
records, to outstrip our yesterday by our today.*
Stewart B. Johnson

PRESIDENT'S CORNER



Happy New Year

SLIDES DUE for SLIDE OF THE YEAR COMPETITIONS

✓ Slide of the Year - 3 slides

Three (3) slides exhibited either in monthly club competition or any club participating study group or competition are eligible. Rules were printed in the December 1995 Pilchucker.

✓ Wildflower of the Year - 3 slides

1. This contest is open to members of the Pilchuck Camera Club in good standing.
2. The contest will run from January 1 through December 31 each year.
3. Three (3) slides may be entered per contestant.
4. The slide must have been taken during the competition year.

5. The subject of the competition is wildflowers.
6. Cultivated or domestic flowers are not eligible.
7. PSA Nature Division rules will apply.
8. This competition will be judged by a recognized PSA Nature judge.
9. The trophy will be awarded at the annual Slide of the Year banquet.

✓ Assigned Subject "Churches" - 3 slides

Three slides may be entered in this annual competition. The slide must have been taken in 1995. The subject may be a church, churches, or any part of a church.

NATURE COMPETITION

January 11, 1996

"Grizzley"	Ron McInnes	0
"Peek-A-Boo"	Dennis Alej	10
"Thistle & Bee"	Janet Rapelje	7
"Bird Nest Fungi"	Anna Sebring	0
"Western Toad"	Don Rapelje	4
"Cat Tail"	Ron McInnes	12
"Snag & Moon"	Janet Rapelje	5
"Fly Agaric"	Anna Sebring	7
"Autumn Fire"	Don Rapelje	5
"Babbling Brook"	Ron McInnes	0
"Foxglove"	Janet Rapelje	2
"Salmon Berry Blossom"	Anna Sebring	1
"Wapiti Bull"	Jim Geniesse	15
"Vine Maple Color"	Don Rapelje	8
"Maple Leaves In Scarlett"	Stan Parmeter	0
"Bear"	Suzanne Ladd	6
"Australian Blue-Winged Kookaburra"	Stan Parmeter	2
"Orange Cup"	Suzanne Ladd	8
"Daisies & Poppies"	Stan Parmeter	2
"Autumn Red"	Suzanne Ladd	3
"Old Faithful"	Sherman Bronsink	5
"Devils Tower"	Sherman Bronsink	5
"Old One"	Sherman Bronsink	1

PRESIDENT'S CORNER



1996 is now almost a month old. Time flies when you're having fun! The new Year will bring us many exciting challenges & opportunities which we should face head on, cameras at the ready.

I'd like to take a moment to say g'day to our new members and if you haven't said g'day to them, please do so. There is so much we can learn from each other and any new ideas are a benefit to us all.

The Slide of the Year Banquet is the 24th of February and I hope to see you all present not just for the excellent slides but for the fellowship also. It will be a great evening of fun that I'm sure everyone will enjoy.

If anyone has any ideas for field trips or workshops, please speak up.

Here's to our best picture taking year ever. Keep those camera's clickin'.

Suzanne

NEW MEMBER

Pilchuck Camera Club welcomes our new member:

Rick Hunter
6807 Totem Beach Loop Rd
Marysville WA 98270
Tele: (360) 659-1859

Rick, we hope you will enjoy the activities of the club and let us know what you expect from your membership. We are open to any ideas which will give our members the opportunity to learn and enjoy photography.

1996 INTERCLUB TRAVELING SLIDE SALON

The deadline for entering slides in the 1996 Traveling Slide Salon is January 15, 1996. Each club member is allowed to enter two (2) slides with a club maximum of twenty (20) slides. The two slides scoring highest, as determined by the other clubs in the circuit go on to compete in the finals for 1st, 2nd, 3rd, or Honorable Mentions. The top two slides from each club are shown at the NWCCC Conference, where honor winners receive formal recognition.

Let's give the other clubs some competition by entering a couple of our best slides. Any subject is accepted and may have been taken at any time. Please don't enter slides that have been entered in this competition in previous years. Be aware that the slides will not be returned until after the 1996 NWCCC Conference in November. Dupes are accepted.

Janet Rapelje is collecting the slides at the January meeting.

FEBRUARY PROGRAM

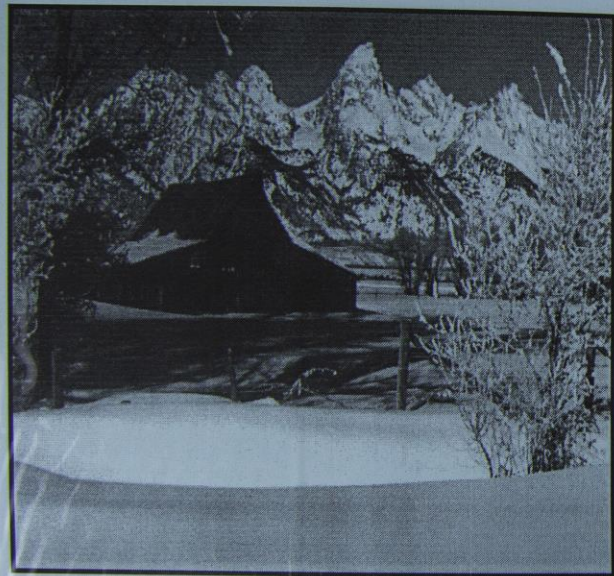
Once again we welcome *Philip Jennings* to be our guest. Phil is an enthusiastic photographer, judge, and leader. For fifty years, Phil continuously served the NWCCC as Color Slide Director, Print Director, Board Member, and many committees. In 1974 Phil received the NWCCC Hall of Fame Award. In 1991 he received the NWCCC's most prestigious award, The Directors Award. This award is to recognize long and faithful service in the NWCCC. In 1992 Phil received the NWCCC Progress Award.

Phil will give us some pointers on what makes good and not so good photography.

THE PILCHUCKER

MARCH 1996

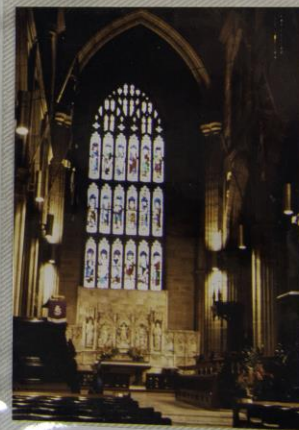
SLIDE OF THE YEAR BANQUET ISSUE



TETON BARN
by Jim Geniesse, 1995 Slide of the Year



1995 slide of the year winner:
JIM GENIESSE.



Winner of 1995 assigned subject
"CHURCHES", SUSANNE JENKINS.





Anna Sebring, receives a Lifetime Membership in the Pitlchuck Camera Club, for her dedicated service to the club.



NORLAND KING 3rd place winner of slide of the year.



DON RAPELJE 2nd place winner of slide of the year.



Winning Slides, Wildflower Competition

A- Paintbrush and Red Rocks by Jim Geniesse, 1st Place.

B- Lady Slipper by Jim Geniesse, 2nd Place.

C- Lewis Monkey Flower by Janet Rapelje, 3rd Place

D- Columbia Tiger Lily by Jim Geniesse, HM.



1995 WINNERS





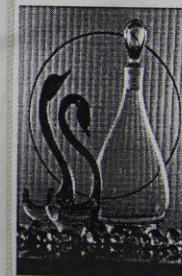
Wild Flower Winner Jim Geniesse 1st on left,
2nd pl. on right.



Janet Rapelje 1st Slide of Year on left,
3rd pl. Wildflower on right.



Place of Worship by Steve Lightle, 1st assigned
subject



Elegant Swans by Jim Geniesse, 1st Side of
the Year



Oriental
Poppies by
Janet Rapelje,
Side of the
Year 1st.

TOP THREE POINT ACHIEVERS RECEIVE AWARDS OF MERIT

The three members of Pilchuck Camera Club earning the most points for the year 1995 and receiving Merit Awards are:

Jim Geniesse	874 points
Don Rapelje	830 points
Norland King	803 points

LARRY SEBRING MEMORIAL AWARD PRESENTED TO PHILIP JACOBSON

Phil Jacobson joined Pilchuck Camera Club on July 25, 1968. He provided the club with many programs and was presented a Life Membership Certificate in 1987. During his years of taking photos, Phil earned over 7000 points in the competitions. He was taking pictures before most of us were born (unless you are over 81). Anna Sebring and Ted and Fran Treleven made the trip to Seattle to present this award to Phil. At 100 years of age Phil is proud to be the recipient of this special award.

PILCHUCK CAMERA CLUB 1995 Achievement Award Certificates

During the regular monthly competition, all slides scoring 20 points or more are counted toward Achievement Award Certificates. A certificate is awarded for each 500 points up to 2000 and for each 1000 points thereafter.

Dennis Aley	500 points
Harriett Jensen	1000 points
Howard Hansen	1000 points
Barbara Wagner	1000 points
Norland King	1500 points
Suzanne Ladd	1500 points
Norland King	2000 points
Suzanne Ladd	2000 points
Norman Jensen	3000 points
Don Rapelje	5000 points
Janet Rapelje	5000 points
Stan Parmeter	5000 points
Ron McInnes	6000 points
Bessie Smith	11000 points
Jim Geniesse	12000 points
Anna Sebring	15000 points



HM Slide of the Year
Jim Geniesse "Elegant Swans"



HM assignment of the year
"Churches" Steve Lightle



Wild flower 1st Place
Jim Geniesse.



Assigned subject "Churches"
2nd Pl.
Steve Lightle



Assigned subject "Churches"
3rd Pl.
Jim Geniesse



HM Slide of the Year
3rd Pl.
Don Rapelje

1995 ASSIGNED SUBJECT - "CHURCHES"

TITLE	SCORE	MAKER
CATHEDRAL	11	Suzanne Ladd
PEACEFUL SETTING	8	Suzanne Ladd
ALTER*	15	Suzanne Ladd
COUNTRY CHURCH	9	Dennis Aley
SEASIDE CHURCH	12	Dennis Aley
OYSTERVILLE CHURCH #1	7	Anna Sebring
OYSTERVILLE CHURCH #2	9	Anna Sebring
PLACE OF WORSHIP*	12	Steve Lightle
SAINT ANNES ARCHES	12	Steve Lightle
BLUE DOMED CATHEDRAL*	15	Steve Lightle
ST. MARGARETS	9	Jim Geniesse
CONWAY CHURCH	9	Jim Geniesse
CHAPEL IN THE SNOW*	13	Jim Geniesse
SYLVANA'S EARLY CHURCH	7	Norm Jensen
10,000 LOG CHURCH	9	Don Rapelje
ST. PAULS CHURCH	10	Don Rapelje
KIRCHE CHURCH	10	Don Rapelje
ST. PETERS AT SEWARD	9	Janet Rapelje

PLACE OF WORSHIP by Steve Lightle	HM
CHAPEL IN THE SNOW by Jim Geniesse	3rd Place
BLUE DOMED CATHEDRAL by Steve Lightle	2nd Place
ALTER by Suzanne Ladd	1st Place

1995 "WILDFLOWER COMPETITION"

TITLE	SCORE	MAKER
YOUNG & OLD	7	Ron McInnes
PAINT BRUSH	8	Suzanne Ladd
TWO TOGETHER	8	Suzanne Ladd
SINGLE LILLY	12	Suzanne Ladd
MT. WILD FLOWERS	8	Norland King
SKUNK CABBAGE	10	Norland King
THISTLE IN SILOUETTE	7	Dennis Aley
LADY SLIPPER*	14	Jim Geniesse
COLUMBIA TIGER LILY*	13	Jim Geniesse
PAINTBRUSH AND RED ROCKS*	15	Jim Geniesse
WESTERN TRILLIUM TONGUE	9	Anna Sebring
A BUSY BEE	7	Anna Sebring
A WILD ROSE	12	Anna Sebring
CHICORY	11	Janet Rapelje
LEWIS MONKEY FLOWER*	14	Janet Rapelje
BLAZING STAR	10	Janet Rapelje
SURROUNDED	9	Don Rapelje
BALSAM ROOT	11	Don Rapelje
LONG LEAVED PHLOX	8	Don Rapelje

COLUMBIA TIGER LILY by Jim Geniesse	HM
LEWIS MONKEY FLOWER by Janet Rapelje	3rd Place
LADY SLIPPER by Jim Geniesse	2nd Place
PAINTBRUSH AND RED ROCKS by Jim Geniesse	1st Place



BANQUET PROGRAM

Frans Alkemada presented a program on the people and villages along the back-country roads of Greece. Beautiful photography of typical white washed homes in the eastern Mediterranean. There was quite a contrast when pictures were shown of the people in this area. Very simple black attire was worn nothing at all colorful. It made one feel that Greece would be a beautiful spot to get lost in, lazy and relaxed.

PRESIDENT'S CORNER

The Banquet is over, the awards given and the slides were great. Our club may be small but we sure have quality. Thanks to everyone who participated both in competition and in attending the Banquet. Also I would like to thank everyone for their help in making this event so successful. The program by Frans Alkemada was marvelous and brought back many wonderful memories for me of my time spent in Greece. How about a field trip to Greece???

I am still in awe of my award- I look at it everyday. Now it's onward to more achievements and the joy of getting out and putting my style of "Seeing" on film.

Workshops are a learning experience and we hope to have a few of them this year. If any member has any ideas on special techniques they would like to share, please say so.

This is going to be a great year for photography. Suzanne

Suzanne Ladd places first in the assigned subject (Churches) competition.



29TH ANNUAL SLIDE OF THE YEAR BANQUET

The 29th Annual Slide of the Year Banquet was attended by 35 members and guests.

Frans Alkemada presented a program on the people and villages along the back-country roads of Greece, which was enjoyed by all. The photography was beautiful! Thank you Frans.

Thank you to all who made this annual event a big success. Suzanne Ladd made arrangements with Harvey's Restaurant, Harriett Jensen planned the table decor, Anna Sebring made sure the engraving of awards was completed by Emerald City Plaque Company and Richard Wagner was the photographer for the awards presentation. Jim Geniesse made all the title slides, Janet Rapelje arranged for the judging of the entries and Stan Parmeter provided the enlargements and dupes for the winning slides. Congratulations to all the winners.

Slides of the year are chosen from slides entered in the monthly competitions throughout the year. Each member may enter up to three slides in this competition.



PILCHUCK CAMERA CLUB 1995 SLIDE OF THE YEAR ENTRIES

TITLE	SCORE	MAKER
GOLD FEATHERS	9	Bessie Smith
WHITE HORSE MTN.	9	Bessie Smith
CASCADE MTNS.	8	Bessie Smith
SOAP BUBBLES	11	Ron McInnes
O'BOY! HOT DOGS	8	Ron McInnes
SIGNS OF SPRING	8	Ron McInnes
RED & YELLOW	10	Suzanne Ladd
SASHA	10	Suzanne Ladd
OPERA HOUSE	8	Suzanne Ladd
ZOOMING	13	3rd Norland King
FLUSHED	12	Norland King
LAMP LIGHTER	9	Norland King
BIRD OF COLOR	12	Dennis Alej
PORTRAIT OF A BOBCAT	8	Dennis Alej
HECETA LIGHT HOUSE	9	Dennis Alej
TETON BARN	15	1st Jim Geniesse
WINTER WONDERLAND	12	Jim Geniesse
ELEGANT SWANS	13	HM Jim Geniesse
BLACK BEARD	9	Anna Sebring
SUN BURST	9	Anna Sebring
ANGEL WINGS	9	Anna Sebring
SYDNEY OPERA HOUSE & BRIDGE	12	Stan Parmeter
FIRE SWAN	8	Stan Parmeter
TULIPS #2	7	Stan Parmeter
CATCHING THOSE LAST RAYS	10	Steve Lightle
MORNING ON HOMEACRES RD.	11	Steve Lightle
COLD MORNING IN THE FIELD	10	Steve Lightle
MISTY	7	Norm Jensen
FIDALGO STRAIT	11	Norm Jensen
ROTUNDA	10	Norm Jensen
FLAMING RED	9	Don Rapelje
NURSING TWINS	13	HM Don Rapelje
WHAT A VIEW	14	2nd Don Rapelje
PRAIRIE WAGON	9	Janet Rapelje
FIRST SNOW	12	Janet Rapelje
ORIENTAL POPPIES	12	HM Janet Rapelje

ORIENTAL POPPIES by Janet Rapelje HM
NURSING TWINS by Don Rapelje HM
ELEGANT SWANS by Jim Geniesse HM
ZOOMING by Norland King 3rd Place
WHAT A VIEW by Don Rapelje 2nd Place
TETON BARN by Jim Geniesse SLIDE OF THE YEAR

Judges for our Slide of the Year competitions were Dr. C.W. Biedel, Marge Biedel, and Steve Fisher of the f.67 Camera Club in Bremerton. We couldn't have asked for more qualified and knowledgeable judges. The Northwest was covered in snow and ice and travel was impossible but the judging was completed and returned to the club on time! Thank you Dr. Biedel, Marge and Steve for a job well done.

NATURE COMPETITION

April 11, 1996

"Aspen Forest"	Janet Rapelje	6
"Wise One"	Ron McInnes	0
"Face in Stone"	Don Rapelje	0
"Golden Eagle"	Dennis Alej	7
"Pushy' Amanita"	Anna Sebring	3
"Dragonfly"	Steve Lightle	*11
"Full Curl Bighorn"	Jim Geniesse	*10
"Looking for Trouble"	Norland King	*14
"Greenhead at Rest"	Stan Parmeter	5
"Who are You?"	Suzanne Ladd	2
"Thimbleberry Foliage"	Janet Rapelje	6
"Trio"	Ron McInnes	2
"Lots of Fungi"	Don Rapelje	6
"Immature Bald Eagle"	Dennis Alej	1
"Drippy Vine Maple"	Anna Sebring	0
"Water Ouzel"	Steve Lightle	*12
"Winter on the Snake River"	Jim Geniesse	*18
"Who's That Bird?"	Norland King	7
"Buffalo"	Stan Parmeter	1
"Spider's Rainbow"	Suzanne Ladd	2
"Mt Moran Sunrise"	Janet Rapelje	*15
"Pelicans"	Ron McInnes	1
"Swinging"	Don Rapelje	3
"Bob Cat"	Dennis Alej	6
"Deadly Nightshade"	Anna Sebring	0
"Bear Facts"	Norland King	0
"Out for a Swim"	Stan Parmeter	1
"Cattails and Fog"	Suzanne Ladd	2
"Sunrise at Turnagain Arm"	Dick Balnicky	*8
"Tern Lake at Midnight"	Dick Balnicky	1

* Slide selected for PSA Club Nature Competition

ANNA SEBRING IS HONORED

At the 1995 Slide of the Year Banquet on February 24, *Anna Sebring* received a Lifetime Membership Appreciation Certificate for her dedicated service to the club. *Anna* started her photography by selling magazine subscriptions to earn a Rainbow Hawkeye No. 2A Kodak Camera. She has been a member of Pilchuck Camera Club for 28 years, joining on February 8, 1968. For 25 years she assisted her husband, Larry, in publishing the monthly newsletter for the club, winning many awards.

Over the years *Anna* has served as President of the club for 7 terms. She has been Vice President for 6 terms and Treasurer for 1 term. She was a Board Member for the NWCCC for many years, keeping our club involved with the Council. Along with her husband, Larry, she earned the NWCCC Hall of Fame Award in 1987 for service to the Council.

She has been a consistent and active member in the club competitions earning over 15,000 points. Earning many awards, her slides have appeared on the cover of the *Pilchucker* 21 times.

Anna has taught photography to mountaineering classes at Everett Community College and to the Boy Scouts of the Everett Area Council of Snohomish County. She has shared her photographic knowledge with all who have been members of Pilchuck Camera Club.

In September of 1990 *Anna* received the honor of Associate of the Photographic Society of America for distinguished service at all levels in the Pacific Northwest. She was honored for her work as a photographer, naturalist, judge and writer.

We are honored to have *Anna* as a member of our club and thank her for all she has contributed to the club.

One of Anna's photos of a previous winners.

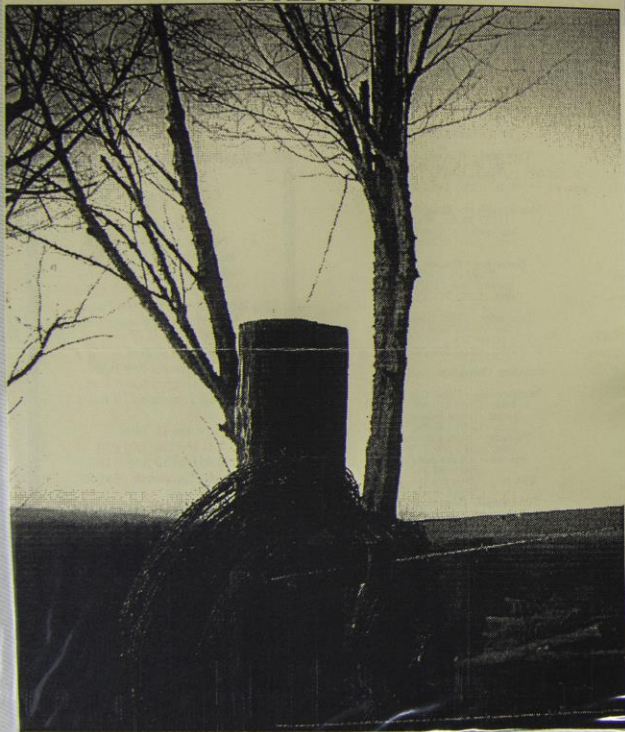


STEPTOE BUTTE FIELD TRIP PLANNED FOR MAY, 1996

A field trip to STEPTOE Butte in Eastern Washington is planned for May 17, 18, and 19. If you want motel accommodations in STEPTOE, they are available at Hartley's Wheel In, telephone (509) 397-3195. We will be spending time photographing the many unique features of the surrounding farm area and investigating some back roads in the area. For those of you with self contained camping vehicles, there is parking at the motel but with no hook-ups available.

THE PILCHUCKER

APRIL 1996



"Sundown"
by Steve Winters

QUARTERLY ASSIGNED SUBJECTS

The subjects for the second quarter are April, May, and June. What does each of these months mean to you? Let your slides represent your feelings during these months of the year. Maybe a Holiday during the month is important to you or some activity performed during this time period. Whatever your interests, capture them on film and share them with the camera club members at the July meeting.

The quarterly assigned subjects are to add interest and involvement to club activities. These are not competitions but inspirations to get out and take slides of subjects we often overlook. At the end of each quarter the club members show their results. Each member perceives a subject differently which makes this an interesting and worthwhile project.

APRIL PROGRAM

Howard Hansen will present the 1994-1995 PSA TRAVELING SLIDE PROGRAM. This program contains the best slides from all over the world that were finalists during the 1994-1995 International Slide of the Year Competition. Don't miss this show! This is some of the best photography in the world.

NEW MEMBER

Pilchuck Camera Club welcomes our new member: Becky Bivins
768 Oakhurst Dr
Pacific WA 98047
Tele: 206-804-9247

STEPTOE BUTTE FIELD TRIP

May 17, 18, & 19 - The final plans for the field trip to Steptoe are being made and those of you who plan to attend the trip are asked to contact Don Rapelje. Everyone is responsible for their own lodging and meals. Hartley's Wheel In may still have rooms available in Steptoe. The telephone number there is (509) 397-3195. Also, the Sesta Motel in Colfax may still have rooms. The telephone there is (509) 397-3417. If you plan on attending the field trip, get your reservations in now as WSU is having graduation and motels are filling fast. Don Rapelje will check out the camping facilities in mid-April and let the members know what is available.

NATURE COMPETITION

April 11, 1996

"Aspen Forest"	Janet Rapelje	6
"Wise One"	Ron McInnes	0
"Face in Stone"	Don Rapelje	0
"Golden Eagle"	Dennis Aley	7
"Pushy" Amanita	Anna Sebring	3
"Dragonfly"	Steve Lightle	*11
"Full Curl Bighorn"	Jim Geniesse	*10
"Looking for Trouble"	Norland King	*14
"Greenhead at Rest"	Stan Parmeter	5
"Who are You?"	Suzanne Ladd	2
"Thimbleberry Foliage"	Janet Rapelje	6
"Trio"	Ron McInnes	2
"Lots of Fungi"	Don Rapelje	6
"Immature Bald Eagle"	Dennis Aley	1
"Drippy Vine Maple"	Anna Sebring	0
"Water Ouzel"	Steve Lightle	*12
"Winter on the Snake River"	Jim Geniesse	*18
"Who's That Bird?"	Norland King	7
"Buffalo"	Stan Parmeter	1
"Spider's Rainbow"	Suzanne Ladd	2
"Mt Moran Sunrise"	Janet Rapelje	*15
"Pelicans"	Ron McInnes	1
"Swinging"	Don Rapelje	3
"Bob Cat"	Dennis Aley	6
"Deadly Nightshade"	Anna Sebring	0
"Bear Facts"	Norland King	0
"Out for a Swim"	Stan Parmeter	1
"Cattails and Fog"	Suzanne Ladd	2
"Sunrise at Turnagain Arm"	Dick Balnick	*8
"Tern Lake at Midnight"	Dick Balnick	1

* Slide selected for PSA Club Nature Competition



Jean Timmermeister
and Anna Sebring



Don, Susanne & guest

MAY PROGRAM

Jean Timmermeister will present a program on creating a slide show. Jean will give us tips on themes, music and/or narration, sequencing, titles, and suitable endings.

Jean has been an active Board Member of the NWCCC for several years. She has served as secretary and president of the NWCCC. Jean is very active in PSA activities. She was founder of the Evergreen Group Camera Club in Seattle and initiated the Evergreen Salon for International Photo Travel Exhibition in PSA. Jean is a member of the Seattle Photographic Society and Printmakers Critique.

1996 INTERNATIONAL CHALLENGE

The Regional Judging for the International Challenge at the King City Town Hall on April 6 showed the following results for Pilchuck Camera Club entries:

Slide Title	Slide Maker	Score
Raindrops and Rainbows	Anna Sebring	6
Sydney Opera House & Bridge	Stan Parmeter	9
Part of History	Suzanne Ladd	8
Two for Lunch	Don Rapelje	9
Oriental Poppies	Janet Rapelje	7

No slides from our club were selected for the challenge. This is a tough competition!

THANK YOU JEAN TIMMERMEISTER

Jean presented our May program on putting a slide show together. She left us with many suggestions and hints for presenting a slide show that would be interesting and well prepared. She provided excellent examples of background music to enhance a show and not be overpowering. Pilchuck Camera Club appreciated Jean donating her time and knowledge for our benefit. She did a fine job! Thank you Jean.

PRESIDENTS CORNER

By Janet Rapelje

How can I possibly replace Suzanne as our President? It just isn't possible! For eight months she handled the presidency with efficiency and dedication. She was full of life and laughter and made our club a fun place to be.

I will never be the president Suzanne was but I will do my best to serve you well.

At the May Board meeting twenty-two members and guests attended a farewell party for Suzanne. There were tears and laughter and good food to share. Although Suzanne returned to Australia on May 26, she still remains a member of The Pilchuck Camera Club. She has paid her dues for the coming year and will be participating in our monthly competitions whenever possible. We now consider Suzanne our club's foreign correspondent and news from her will be published in our newsletter. For any members who wish to correspond with Suzanne, her address is:

Suzanne Jenkins
14 Tayswood Street
Woolooware
N.S.W. 2230
Australia



NEW MEMBER

Dick Balnick
6828 Totem Beach Loop
Marysville WA 98271

Welcome to Pilchuck Camera Club Dick.

Member News

Phil Jacobson has been ill with pneumonia since January.

Marjorie Volkman is in the hospital with multiple problems she suffered after a fall. We hope both of these members are feeling better and will have quick recoveries.

CALLING ALL MEMBERS

The *Pilchucker* is always in need of photos for the cover and photography articles of interest to our membership.

If you have a slide that looks like it would be a good black and white picture, have it made into a color print and it can be scanned for the *Pilchucker* cover. Better yet, take some black and white prints.

Can you write an article about taking pictures. Perhaps a special technique you've learned and would like to share with others. Maybe some humorous memories of photo mishaps would be fun to hear about. We would like to hear about those special places you've found for great photos too. Jot down some memories of a trip you took and the things you saw and photographed. Any of these ideas and more would be welcome material for our newsletter.

The Editor

CLUB INFORMATION

It should be noted for the newcomers to the club that there is a projector and screen available if you need one. It may be borrowed, free of charge, by any club member. Contact Janet or Don Rapelje at 652-6623 if you wish to use these items.

New *Membership Handbooks* are in the process of being printed and will soon be available to all members.

Monthly Regular Competition - Bring up to three slides each month to the regular meetings.

On Club meeting nights, members meet for dinner at the King's Table Buffet, 3802 Broadway in Everett at 5:30 P.M. if you wish to join us.

Philip Jacobson, our 100-year-plus member is doing fine and enjoyed a visit from Anna Sebring and Fran & Ted Treleven.

STEPTOE BUTTE FIELD TRIP

May 17 - 19

The field trip to the Palouse will provide great photo opportunity. Hartley's Wheel In Motel has parking space available for campers and trailers, etc. There is no hook-ups. There is also camping available at Kamiak Butte which is about 18 miles from Steptoe Butte and has no hook-ups and very limited camping sites.

The only other facilities available are at Sprague on Hwy. 90. There are two motels here and also camping sites available. Sprague is 45 miles north of Steptoe Butte. One motel here is The Last Roundup, phone (509)-257-2583.

Join us for some fun and photographs.



TOM CLEMANS Steptoe cook. What Pancakes!



WHAT A FIELD TRIP!!
11 members of Pilchuck Camera Club with Jim Geniesse as our guide filled 2 days photographing almost every piece of Steptoe Butt area. Weather, who cared hail one minute, sunshine the next but always a sky filled with beautiful clouds. Green & brown rolling hills, red barns, old home-steads & I can still hear Susanne yelling "STOP" can't miss this shot. Always have Tom around to make delicious blueberry pancakes. Our farewell to little Steptoe... "we'll be back".

"Thanks Don" your plans worked well. Let's try again.



The Pilchucker

JUNE 1996



PILCHUCK CAMERA CLUB NEWSLETTER

"Reflections"
by STEVE LIGHTLE

The Pilchucker

JULY 1996



Barn near Steptoe Butte
by Tom Clemans

PILCHUCK CAMERA CLUB NEWSLETTER

VOLUME 28
NUMBER 10

JULY PROGRAM The Anza-Borrego Desert By Eugene E. Collias

(A four projector show with taped narration and music background, 47 minutes.) This show depicts several portions of a North American Desert. It is the accumulation of four trips to this desert. The show has been presented to the University of Washington Retirees Association, two cactus societies and six camera clubs.

Eugene E. Collias was employed by the University of Washington Department of Oceanography from 1948 to 1981 where he taught Field Methods and Introduction to Oceanography.

Eugene has been a member of Seattle Photographic Society since 1974 and has served as President, Secretary, Treasurer and Salon Chairman. He has been a member of the Photographic Society of America since 1974 and has earned two bronze stars in journalism. He joined the PSA Puget Sound Chapter in 1980 and is presently the treasurer. Eugene has served the NWCCC since 1986 as a Board Member, Secretary, President, and is currently the Treasurer. He judges both prints and slides and lectures on Multi-Image subjects.

ASSIGNED SUBJECT

Anyone having slides for the April, May, and June assigned subject, please bring them for showing at the July 11 meeting.

EUGENE AND DOROTHY COLLIAS

Thank you both for presenting *The Anza-Borrego Desert* for our July program. The show was interesting, informative and very well presented.

MONOCHROME SLIDES

In order to legalize entering monochrome slides in club competitions it is necessary to change the wording in the club Bylaws and competition rules. The wording would be changed from Color Slides to Color and Monochrome Slides. Discussion and approval by the membership will be held at the July 11, 1996 meeting.

HOVENDER HOMESTEAD

The field trip to Hovender Park was attended by five members and enjoyed by all. The cameras were out and clicking on old farm machinery, farm animals, birds, and the Hovender Barn. The adjoining Tennant Lake is a wonderful wetlands with boardwalks to follow and view the birds, wetlands creatures and plants. Also at Tennant Lake there is a fragrance garden to walk through and photograph and picnic tables where we enjoyed our lunch.

A stop at Pioneer Park in Ferndale provided many old log homes and buildings for viewing and pictures. Another stop at Western Washington University and the Outdoor Statues got us out and walking to see the statues which are scattered throughout the campus. The grounds on the campus are beautiful and the statues are unique.

Dinner at IHOP and then home. A great day!

MEMBER NEWS

Congratulations, *Jim Geniesse* for Puget Sound Camera Club *Slide of the Year* for "Teton Barn". *Jim and Ethel* are in Alaska photographing the bears, etc.

Anna Sebring underwent major surgery on June 26. She is recuperating at *Ted and Fran Treleven's* home. It will be awhile before *Anna* is up and about so give her a call or stop by for a visit.

Bessie Smith is still having problems with arthritis and *Frieda Mercer* hasn't been feeling well either.

Howard Hansen has had good and bad news and is waiting to see what the outcome will be on his tumors.

The club members send their get-well wishes to all who are not feeling well.

P.S.A. Competition Results
by Howard C. Hansen

International Club Slide Competition

Due to an error on my part, the June results from this competition have been misplaced and cannot be reported in this issue of the Pilchucker. Composite results for the year have not been received as of this writing and also cannot be reported.

Sherman's slide "Red" was sent to the "Slide of the Year" competition to be judged by the El Camino Real Color Pictorialists of Pasadena, but the results of this judging does not indicate any placement.

Color Slide Competition for Clubs - Nature Division

The results from the May competition have been received and show that the Pilchuck Camera Club received a total of 58 points from this competition and finished the 95/96 season with a total of 165 points and a placement of 19th out of 28 clubs in the "B" group. The results of the June judging, which was hosted by the Plainfield Camera Club of Westfield, New Jersey, are as follows:

Sunrise - Turnagain Arm	by Dick Balnicky	9 Pts
Water Ouzel	by Steve Lightle	9 Pts
Dragonfly	by Steve Lightle	9 Pts
Winter on the Snake River	by Jim Geniesse	10 Pts
Looking for Trouble	by Norland King	10 Pts
Mt. Moran Sunrise	by Janet Rapelje	11 Pts

Donald Rapelje's slide "Nursing Twins", which received an "Award of Merit" ribbon in the October competition was to be entered in the "1966 Slide of the Year Competition" in June, but due to a misinterpretation of the entry rules, I did not realize this error until it was too late to send it. Sorry Don.

AUGUST PROGRAM- Field Trips

Members bring any slides you have of club field trips. Club members participating in the field trip activities are always of interest. Slides you captured while on a field trip will make good subject material for this show. These slides do not have to be award winners but should document the activities enjoyed and the subjects that were found along the way. Dig through all those old slide boxes and make this a real show.

JULY, AUGUST, SEPTEMBER
Assignment → → → → → "PEOPLE"

P.S.A. Competition Results
by Howard C. Hansen

International Club Slide Competition

The December results from this competition have been received and show that the Pilchuck Camera Club received a total of 50 points and has a total of 113 points through the first two judgings and has the club in 14th place out of the 17 clubs in group D. The results from this judging, which was hosted by the Suffolk Camera Club, are as follows:

Visitor	by R. Wagner	6 Points
The Old Stump	by Steve Lightle	8 Points
Bee & Thistle	by R. Patrick	8 Points
Mule Deer Fawn	by Jim Geniesse	9 Points
Oriental Poppies	by Janet Rapelje	9 Points
Sasha	by Suzanne Ladd	10 Points

The February judging is to be hosted by the Santa Rosa Photographic Society of Santa Rosa, California.

Color Slide Competition for Clubs - Nature Division

The results from the October competition have been received and show that the Pilchuck Camera Club received a total of 59 points from this competition and are tied for 13th place out of 28 clubs. This judging was hosted by f.67 Camera Club of Bremerton, Washington with the following results:

At The Top	by Suzanne Ladd	7 Points
Lioness On The Prowl	by Jim Geniesse	9 Points
Rough Legged Hawk	by Donald Rapelje	10 Points
Barrel Cactus	by Anna Sebring	10 Points
Angel Wings	by Anna Sebring	10 Points
Nursing Twins	by Donald Rapelje	13 Points

The Pilchucker

AUGUST 1996



Spring Run Off - Dennis Aley

Steve Lightle.
I don't have any
information on this
photo...I just like it.

FORT CASEY -- FIELD TRIP TREASURE HUNT

Steve Lightle will have the Treasure Hunt slides ready for the September meeting. Seven members worked hard to complete their subject list and bring back some unique slides. It will be fun to see the results, especially the self portraits.

The day was beautiful, the pot luck was delicious and we had a great time. A bonus for one member was seeing a deer in the park.

Members attending were: Sherman Bronsink, Steve Lightle, Ron McInnes, Jim and Ethel Geniesse, Barbara and Richard Wagner, Don and Janet Rapelje, and guests Duane and Adam Rapelje.



Ron McInnes - Fort Casey
"They said to bring
potatoe chips".

WORKSHOP - POTLUCK

A club workshop and potluck is planned for October 19, 1996 at the Rapelje residence. The time will be 10 A.M. until 4 P.M. On the agenda at this time is setups for Blacklight photography, by Richard and Barbara Wagner; Glassware by Jim Geniesse; Creative Color, by Norland King; Glassware with Colored Lights, by Janet Rapelje. If you have a setup to show or want to learn a special technique, let us know and we'll see what we can provide.

This will be a hands-on workshop, so bring your photo equipment and take some pictures.

POT LUCK -- FIELD TRIP

FORT CASEY on Whidbey Island is the site of our 1996 pot-luck to be held on **Tuesday, August 20**. Members and guests will meet at the Fort Casey picnic area at 11:30 a.m. where we will have our meal.

This outing will also include a *Treasure Hunt*. If you wish to participate in the *Treasure Hunt* you will need to bring one roll of 24 exposure, E-6 process slide film. The first picture on the roll will be a self portrait. The next 23 pictures will be for the following items. The items do not have to be in the order listed but you are allowed one picture only for each item.

- | | |
|-------------------------|---------------|
| 1. Self Portrait | 2. Cannon |
| 3. Stairs | 4. Lighthouse |
| 5. Bunkers | 6. Ferry |
| 7. Trees | 8. People |
| 9. Roses/Rosehip | 10. Boats |
| 11. Wildlife | 12. Rocks |
| 13. Window | 14. Ring |
| 15. Railing | 16. Driftwood |
| 17. Walks/Trails | 18. Vehicle |
| 19. Chain | 20. Sign |
| 21. Your choice | 22. Tower |
| 23. View From Cliffs | |
| 24. Color (your choice) | |

At the end of the day, the rolls of film will be collected by Steve Lightle for processing.

Bring food items for the Pot-Luck. There will be a drawing at the August meeting for types of food to bring. Don't forget your own drinks and eating utensils.

Those needing a ride or directions on how to get there need to bring this up at the August meeting or call Don Rapelje at (360)-652-6623. Join us for a day of fun and photography.

UPCOMING FIELD TRIPS

September - *Deception Pass*. Date to be decided at the September meeting.

October - *Autumn Color at Mt. Baker*. Early in the month for best color.

November - No field trips.

December - *Point Defiance Zoo at Night*. Special holiday night lighting during the month of December.

NOTICE!!!

THE CLOSING DATE FOR THE **CREATIVE COLOR SLIDE SALON** IS **AUGUST 15**, NOT **SEPTEMBER 10** AS STATED ON PAGE 3. **OPEN COLOR SLIDE SALON CLOSING DATE REMAINS SEPTEMBER 10**. ALL **PRINT SALONS CLOSING DATE IS SEPTEMBER 20!** (Sorry for the confusion. I did not get the above information until after page 3 was printed. Editor)

MEMBER NEWS

Anna Sebring is progressing well with her recovery after surgery. She isn't out running her tractor or plowing the back forty, but she is enjoying a few quiet activities that don't require a lot of activity. Best wishes Anna.

No news from Bessie Smith. We hope this means she is feeling well.

NEWS OF SUZANNE

Suzanne has a job with Fletcher Photographics in Pitt Street, Sydney. She will keep us informed of her progress. She has finished her roll of film taken on the Palouse field trip and yes, she has some more award winners!!! She will write more soon.

DECEPTION PASS TRIP

Pilchuck Camera Club members *Steve Lightle, Steve Winters, Don Rapelje and Janet Rapelje* made the trip to Deception Pass. *Janet Wright* from the Stanwood - Camano club joined us for a relaxing day. The morning clouds cleared for a beautiful sunny day with clouds for added interest. A fun day of photographing seagulls, driftwood, rocks, scenics, people, boats, and each other. A stop in Anacortes at JT and Della Owens to see their beautiful dahlias and then on to Capsana Park for a few last shots.

1996 NWCCC ANNUAL CONFERENCE

West Coast Tyee Hotel
500 Tyee Drive
Tumwater WA

November 1, 2, 3

Toll Free Reservations
1-800-386-8933

Conference Room Rates:
Single \$57.00
Double \$63.00

Featuring:
Charles Krebs
Don Van Polen

FORT CASEY -- FIELD TRIP TREASURE HUNT

Steve Lightle will have the Treasure Hunt slides ready for the September meeting. Seven members worked hard to complete their subject list and bring back some unique slides. It will be fun to see the results, especially the self portraits.

The day was beautiful, the pot luck was delicious and we had a great time. A bonus for one member was seeing a deer in the park.

Members attending were: *Sherman Bronsink, Steve Lightle, Ron McInnes, Jim and Ethel Geniesse, Barbara and Richard Wagner, Don and Janet Rapelje, and guests Duane and Adam Rapelje.*

NWCCC QUARTERLY COMPETITIONS

Results of the Second Quarterly Slide Competition show two of Pilchuck Camera Club members as winners. *Sandstone Pattern* by *Jim Geniesse* and *Serenity* by *Donald Rapelje* both took Honorable Mention awards. These two slides will be in the final competition of the three quarters. Congratulations to Jim and Don. The final winners will be announced at the NWCCC Conference in November. The third quarter winners will be announced soon.

NWCCC 3RD QUARTERLY COMPETITION

Results of the NWCCC Third Quarterly Competition for 1996 show Pilchuck Camera club member *Jim Geniesse* received three **Honorable Mentions**. These three winners will be entered in the final competition and the final winners will be announced at the NWCCC Conference in November. Congratulations Jim!

NWCCC INTERCLUB SLIDE SHOW JUDGING

Pilchuck members attending the judging held on September 13, were *Dennis Aley, Steve Lightle, and Don and Janet Rapelje*. Three shows were presented, all were very well put together. We will not know who the winners are until the NWCCC Conference in November but Pilchuck's show "*Color is Where You Find It*" looked good and will be shown at the November meeting.



Club members working on the Interclub Slide Show, "COLOR IS WHERE FIND IT". Pilchuck club took 2nd place.

NWCCC INTERCLUB SLIDE SHOW COMPETITION

Pilchuck Camera Club's entry into the NWCCC Interclub Slide Show Competition will be shown at the November meeting. The show is titled, *Color Is Where You Find It*, and participating members spent many hours putting it all together. The winners will be announced at the NWCCC Conference. Winners or not, we all had a great time in picking just the right slides and finding the music to fit. Each year we gain a little more knowledge on the basics of a good show.

Members wanting to learn more on how to put together a slide show are encouraged to participate in the group led by *Bill Black* that will be meeting soon. The new group will be learning how to produce slide shows.



Which slide will we use? *Norland King, Steve Lightle, Dennis Aley, Jan Rapelje.*



What concentration on music to be used for the Interclub Slide Show.

MEMBER NEWS

Ron McInnes is recovering from triple bypass and carotid artery surgery. He will be with his sister in Bellingham for a couple of weeks and we hope to see him back at the club activities soon. Norm Jensen's recovery is nothing short of miraculous. He amazes us all. Bessie Smith has decided not to attend the club meetings as it is too difficult to get around with her knees and hip problems. We are all thinking of you Bessie. Anna Sebring is getting better daily and attended the annual PSA Chapter meeting with Janet Rapelje. Howard Hansen is home after his surgery to remove cancerous lesions from the brain. In a few weeks he will receive a report on the success of the surgery. Howard we are wishing you the best. Keep up the positive attitude.

3RD QUARTER ASSIGNMENT

Please bring your third quarter Assignment Slides, PEOPLE, to the October meeting for showing. Remember these people slides must have been taken in July, August, or September of 1996 to be eligible for this assignment. The assignment slides are not for competition but to encourage members to photograph various subjects.

"PILCHUCKER"

The Pilchucker, edited by Janet Rapelje and assistants Tom Clemans and Dennis Alely has placed 4th out of 85 for an HONOR AWARD in the 1996 PSA Bulletin Competition. The "Pilchucker" received 237 points out of a possible 255 points. Thank you to all who contribute to the "Pilchucker".

MEMBER NEWS

Volunteering at the Evergreen State Fair in the Photography Division were Norland King and Dennis Alely.

Richard and Barbara Wagner are traveling to California with their dog Sam. They will travel the scenic back roads and camp along the way in their tent trailer.

Jim and Ethel Geniesse are attending the PSA Conference in Tucson Arizona.

Anna Sebring is recovering slowly from her surgery and has been seen out and about. You just can't keep Anna down for long!

Several members are not in the best of health including Eldred Volkman, Bessie Smith, and Frieda Mercer. Best wishes to these members and we hope to see them soon.

WORKSHOP - POTLUCK

Don't forget the club workshop and potluck is on October 19, 1996 at the Rapelje residence from 10 A.M. until 4 P.M. This is a hands on workshop so bring your photo equipment and film and take lots of pictures. There will be blacklight, two types of glassware setups, a mini studio, and a short lesson on multiple exposures.

Bring something for the potluck and join us for a day of fun.

DUES ARE DUE

Dues are due and payable at the September meeting. If you haven't yet paid your dues, please do so as soon as possible. To qualify for the monthly competitions, earn points, and enjoy club activities, you must be a current member.

Send your check today to our Treasurer, Ethel Geniesse, 504 View Ridge Dr., Everett, WA 98203 or pay her at the November meeting. Dues are \$20.00 per person or \$30.00 per couple. Where else can you enjoy all the fun we have for a mere \$20.00?

Hunting With a Camera

(or stalking the wild beasts)

by Dennis Alely

How does this differ from wildlife photography? Not a whole lot. Except it's like bowhunting with archery equipment, if you really want to put meat on the table you're better off going to the market not the woodlands.

What is hunting with a camera, and why does it differ from wildlife photography in general? If it's great photos you're after, you are better off going to a game farm, zoo, or a park where the animals are used to seeing humans. But if it's a challenge you want, just try camera hunting. Finding the animals in their environment, and getting close enough to fill the frame with an animal.

Why did I mention bowhunting? Because, regardless of what your personal feelings are about bowhunting, we can learn a lot from bowhunters. Most rifle hunters brag about the long shots they have made, 100 to 300 yards. Not so good if you are hunting with a camera, unless you have a 500 MM lens with a 2X extender. On the other hand bowhunters have a tendency to brag about how close they can get to their prey. It matters little if they get the shot off, it's exciting to see how close they come to the animal. The average bowshot is 15 yards.

If I can get within 15 yards of a deer I can fill the frame with a headshot using a 400 MM lens. 25 yards I can fill the frame with a full body shot, cropped in pretty tight.

Two gentlemen named Pope and Young are attributed to being the fathers of modern bowhunting. In reality it was Ishi, the last living American native, of his tribe. Dr. Pope was studying Ishi, however it was Ishi who taught, Pope and Young, the ways of the bowhunter. So modern bowhunting is not so modern after all.

However modern techniques have improved on the art of bowhunting, and it is these skills and techniques that we can take advantage of as photographers.

I would like to share with you some of the things I have picked up along the trail. I know everyone is aware of the keen sense of smell that animals have. But what can you do about it? First, and most important, be aware of the wind currents. No matter how slight they will carry your scent far ahead of you, alerting every animal in the area. Be aware of unusual odors that may be foreign to animals. Colognes, perfumes, tobacco, the soap we use may be scented, all these are stronger than your normal body odor (unless you've been camping for a few days without the benefit of a bath). One of the strongest odors your clothes can pick up is campfire smoke. Did you ever smell someone that has been near a fire. Well remember animals have a better sense of smell. Hang your field clothes in a pine tree away from the smoke of a campfire.

Hang a fine silk thread from your camera so you can watch for wind drifts no matter how slight. There are special soaps you can buy to wash your field clothes in that will leave them odorless. Also there are no bluing

agents in them, bluing agents will make your clothes glow under a UV light. It is thought that most animals can see this glow without the benefit of a UV light. Speaking of clothes. There are some really great camouflage clothing available, oak leaf, forest, desert, snow, just about any pattern to match the surroundings you are in.

Scents, there are all kinds of scents on the market that will help cover your natural scent. I don't recommend the apple scent—tried it once and attracted every bee within a 100 yards.

If you're stalking the beasts of the forest, walk slow, after all if you think about it you are in no particular hurry to get anywhere special. Take two or three slow steps and stop, look around. Do your stalking early in the morning and late in the evening. Most animals feed at night, however there is that early and late overlap time. During the day if you want to stay out, find a place near a game trail or water hole. Most animals sleep during the day, but will get up to go to water. On a hot day, they will move their bed to a cooler spot, as the sun encroaches on their bedding place.

Look for signs of life, tracks, spoor, tree rubbings, droppings, holes where smaller animals may live. If the hole has a spider web across the opening it's probably no longer in use. Well worn trails should show fresh tracks.

For predators, you can call them to you (no you don't use a dog whistle) by using a distressed rabbit call. Make like a hurt rabbit and the predators think they have a free meal. The calls take a little practice but are very effective. Also there are wild turkey calls, (sound like a hen and bring in a gobbler) and Elk calls. The problem with Elk calls they are only effective during the mating season, which can coincide with hunting season. I don't know about you, but I prefer to do my camera hunting when the hunters are home dreaming about the next hunting season.

Where can you find scents, neutral soaps, field clothing, animal calls, etc. where else— you're local archery shop that caters to bowhunters.



Chapel in the Snow by Jim Geniesse assigned subject "Churches", 3rd place.

NATURE SLIDES

September 12, 1996

"Brown Bear & Sockeye"	Jim Geniesse	13*
"Jane Doe"	Dennis Aley	4
"Who's That Bird"	Norland King	0
"Deer"	Fran Chappell	8
"Mammoth Hot Springs"	Don Rapelje	0
"Elk Thistle"	Janet Rapelje	8
"Death by '64" Earth Quake"	Dick Balnicky	14*
"Center of Attraction"	Norland King	0
"Meadow Land"	Fran Chappell	0
"Huckleberry"	Don Rapelje	12*
"Agoseris Seed"	Janet Rapelje	6
"Alaska Fireweed"	Dick Balnicky	13*
"Leaf in Macro"	Norland King	1
"Butterfly at Mt. Baker"	Fran Chappell	6
"What a View"	Don Rapelje	14*
"Pasque Flower Plume"	Janet Rapelje	4
"Samoan Beach Life"	Dick Balnicky	9*
"Fe Peccarie w/Young"	Anna Sebring	3
"Willow Catkin"	Anna Sebring	0
"White Worm Coral"	Anna Sebring	2

*Slides selected for International PSA Competition
Slides are collected each January, April, and September for the PSA International Nature Division Competition. Each member may bring three (3) nature slides to our regular meetings for these months to enter in this competition. The top slides from our competition are sent on to the PSA competition.

SCENES OF THE NORTHWEST

The October program will be a presentation by Pilchuck Camera Club member, *Dick Balnicky*. Scenes of the Northwest includes areas from Oregon to Alaska. Dick is an avid hiker and photographer and enjoys the scenery and solitude of the beautiful Pacific Northwest. Dick is often out of town working on a disaster, but in the event he is not available, Rick Hunter will present the program for him. At the time of this writing Dick is at work on a disaster in Virginia!

Photographic Society of America

Contact Janet Rapelje for information if you have an interest in joining the Photographic Society of America. If you love photography, you belong in PSA.

WORKSHOP - POTLUCK

A club workshop and potluck is planned for October 19, 1996 at the Rapelje residence. The time will be 10 A.M. until 4 P.M. On the agenda at this time is setups for Blacklight photography, by Richard and Barbara Wagner; Glassware by Jim Geniesse; Creative Color, by Norland King; Glassware with Colored Lights, by Janet Rapelje. If you have a setup to show or want to learn a special technique, let us know and we'll see what we can provide.

This will be a hands-on workshop, so bring your photo equipment and take some pictures.

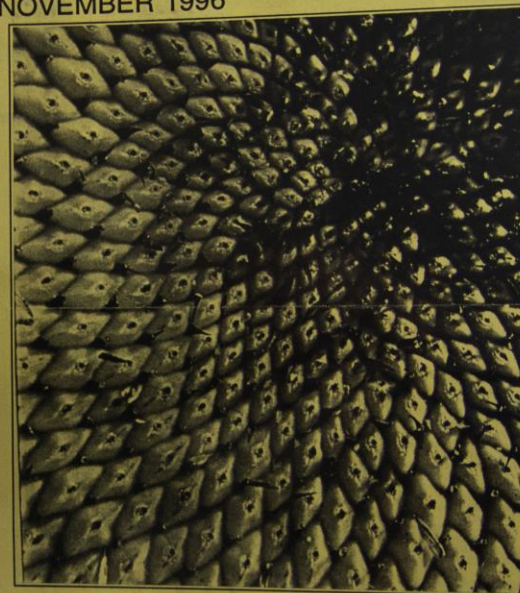
OCTOBER, NOVEMBER & DECEMBER - Assigned Subject

The subject for the last quarter of 1996 is "TABLETOP/STILL LIFE". Now that the weather is turning wet and cool, it's a good time to set up some items indoors and let our imaginations run wild. The possibilities are endless. Attending the October 19 workshop will give you some excellent ideas to work on. This should be an exciting subject.

Remember, the assignment slides must be taken within the last quarter and will be shown at the January 9, 1997 meeting. The assignment slides are not for a competition but to encourage members to take various subjects during the four quarters of each year.

The Pilchucker

NOVEMBER 1996



"Sunflower"
by J.G. Archibald

1996 NWCCC CONFERENCE

Pilchuck Camera Club members attending the NWCCC 1996 Conference in Olympia were: Jim and Ethel Geniesse, Don and Janet Rapelje, Anna Sebring and Janet Wright.
Awards received:

Small Open Color Print Salon

Janet Wright "Reflection of Life" 2nd
and Creative Print Award
Janet Rapelje "Prairie Smoke Flower" HM

(Janet Wright entered her prints under the Stanwood-Camano Club but since she is now a Pilchuck Camera Club member, we are very proud of her accomplishments)

Open Color Slide Salon

Janet Rapelje "Oxbow Bend View" HM

Quarterly Slide Competitions

Jim Geniesse "Sandstone Pattern" HM
Don Rapelje "Serenity" HM
Jim Geniesse "Pink Sand Dunes" HM
Jim Geniesse "Grizzly Bear with Salmon" HM
Jim Geniesse "Textured Old Barn" HM

Quarterly Slide Finals

Jim Geniesse "Textured Old Barn" HM

Interclub Slide Show Competition

Pilchuck Camera Club 3rd Place

COMING EVENTS

November 1, 2, & 3 - NWCCC Conference
West Coast Tyee Hotel, 500 Tyee Drive,
Tumwater, WA

November 14 - New Cameras
Stan Parmeter will present some of the new cameras on the market and demonstrate how they operate.

December 12 - Dick Balnicky will present a show for our enjoyment.

NEW MEMBER - Welcome

Herm Kehm
357 North Seaview Court
Camano Island, WA 98292
(360) 387-1758

All new members are urged to ask questions, show their slides in the competitions and participate in the club activities. This is what makes the club worthwhile to its members. Let us know what you want from the club and what new activities you would like the club to pursue. Your requests will be listened to and if at all possible will be included in the club agenda. WELCOME! Have fun and enjoy your photography.

1996 SLIDE OF THE YEAR

December is the last month to take those slides for our annual competitions. Slides are due to Janet Rapelje at the January 9, meeting. The following list gives the category and number of slides you may enter. The Slide of the Year (SOY) slides must have been shown during 1996 either in monthly competition or any club participating study group or competition. All other categories must have been taken in 1996. See your membership booklet for the rules.

SOY - 3 slides
Wildflower - 3 slides
Assigned Subject -
Action/Motion - 3 slides

FIFTH ANNUAL INVITATIONAL Slide Competition Seattle Photographic Society, Inc.

Pilchuck Camera Club received 81 points in this competition. This was low score for the competition. The low score was due to not having ten (10) slides for our entry. The slides entered were excellent and next year we will have the ten slides necessary and score right up there with the best of them.

NOVEMBER PROGRAM - NEW CAMERAS AND EQUIPMENT

Stan Parmeter, owner of Kits Camera at the Everett Mall and a long-time member of Pilchuck Camera Club will show us some of the new equipment on the market. Stan will demonstrate how the equipment operates, what features are available, and the price range. This is a good opportunity to see what is new, think about Christmas gifts, or choose new equipment for yourself. Maybe just dream a little. Stan will be happy to answer your questions on equipment.

PSA CONFERENCE - Tucson, Arizona by Ethel and Jim Geniesse

We attended the PSA International Conference in Tucson, Arizona in early September. As expected the weather was hot. It was also the monsoon season in the area, so we had a chance to see some very hard rain storms and lots of water in the usually dry river beds.

The conference, attended by about 500 people, has several purposes. It is the one chance each year for all of the various committees and sub-groups of PSA to meet and make policy. We weren't part of that group. It offered a number of programs and workshops so attendees could improve their photographic skills, it organized field trips to see highlights of the area; and permitted social interaction of photographers from all parts of the country. We had our car, so didn't attend the tours. We participated in the workshops, attended many programs and met some interesting people.

The workshops had blacklight, karo syrup, mylar, and glassware setups so we could actually take pictures there. They also provided character and glamour models with proper studio lighting for portrait photography.

Many of the programs were of the usual "how to" or travel subjects that we see at our own NWCCC conferences, and were of a very high caliber. The highlights for me were two on computer manipulation of pictures, now called digital imaging. They showed what could be done, how, what equipment, and the cost. They had several computers there for demonstrations.

We were surprised to see there were only six people from the NWCCC at the conference. We drove to Tucson and extended the trip to three weeks allowing time for sightseeing and photographing of interesting subjects along the way.

MEMBER NEWS

Ron McInnes is home and recovering slowly from his heart surgery. Ron attended the Potluck and Workshop on October 19, but wasn't quite up to taking pictures yet.

Howard Hansen will give us a report at the November meeting on how he is progressing.

One of our new members, Janet Wright, will be spending two weeks in California visiting her mother and sister in November. The word is out that she is taking her camera and will be looking for some award winning slide images.

No news from our foreign correspondent, Suzanne Jenkins, in Australia.

THANK YOU STAN PARMETER

Stan gave us a wonderful presentation on the new APS cameras. He explained in detail all of the features these versatile cameras possess. He showed us a variety of models and price ranges. One of the cameras was not bigger than a pack of cigarettes, which could be carried easily in a shirt pocket. These cameras have several features not available in the 35mm format. They are very light in weight and easy to operate.

Stan is very knowledgeable and can answer any question you may have on the APS or any camera for sale in his newly remodeled Kits Camera Store.

Visit his store at the Everett Mall for some major Christmas ideas or those stocking stuffer items.

Thank you Stan for the excellent job of presenting these cameras.

PRESIDENT'S CORNER

by Janet Rapelje

The workshop held on October 19 gave us many ideas for indoor photography and I hope many of you took some images while the setups were available. These make good winter projects and are always fun and interesting. Remember, our quarterly assigned subject for October, November and December is *Tabletop/Still Life*. Don and I have the black light and colored light set-ups and you are welcome to come and use them.

If you like getting out in the elements, the snow is falling in the mountains and the storm clouds are fantastic for those great impact photos. Bundle up, grab your camera, and have your own photo adventure.



FUN
HIGHT LIGHT
PHOTO.



BLACKLIGHT MAGIC

by George Ferrara, APSA

Fluorescent materials and items can be found everywhere in your home. Searching with your "black or UV light" turned on will reveal numerous fluorescent items. Black light is used in the fields of science, criminology, industry, theatrical productions and much more. There are a number of long wave ultraviolet lamps, but the easiest to acquire and use are the blacklight fluorescent tubes. Several sizes are available from hardware, electrical suppliers, and costume display stores. The 15 watt size easily fits in desk lamps or strip fixtures. These tubes are made by all the major lamp manufacturers and are identified by the code F15T9-BLB. Be sure to purchase only lamps marked BLB. Some are marked BL. These lamps provide white light as well as black light.

Fluorescent Materials:

Plastic containers and toys, string, ribbon and yarn, powder soap detergents, clothing, paper products, petroleum products, minerals, etc. Items that do not readily fluoresce can be coated with fluorescent paint, chalk, pencils or crayons. NOTE: Plastic, glass, metal or wood items should first have a coat of flat white latex paint applied before using the fluorescent paint.

Photographic Equipment:

Single Lens Reflex Camera, lens, cable release and tripod. Filters: UV, UV2A, polarizing, R5 or a K2. Film: Any film may be used, print or slide. I use Seattle Chrome which has an ISO of 100 which I set to ISO 125 on my camera.

Procedures:

Position your two light sources approximately 12 to 14 inches from your subject. With your camera mounted on your tripod, focus carefully and take the meter reading. Be sure all room

lights are turned off before obtaining your meter reading. Record your exposure time and take the picture.

Ideas:

Tabletop setups can be spruced up by adding brilliant colors to your props and background.

Glassware: Add grated fluorescent chalk to water in the container. Rubbing Vaseline to the edges of glassware creates a blue halo effect. Filling the container with Schwepps Tonic Water creates a bluish tone. Anti-freeze creates an over all yellow-green tone.

Bubble pictures: Can be made by placing your subject in an aquarium tank, cover the subject with water, and then add club soda, approximately 1 part of club soda to 40 parts of water. Plastic flowers are excellent subject material. The tank can be illuminated with blacklight or combined with ordinary visible light for special effects.

Create abstracts by using crumpled foil and reflecting fluorescent poster board or fluorescent posters.





COLOR was found when we stopped for a lunch break.

FIELD TRIP TO MT. BAKER

Weather would not cooperate for this field trip, gray skies, wild flowers about gone but Pilchuck camera buffs did not let the weather stop them. Just call this a learning experience we might be surprised. The first stop was made at Nooksack Falls. Another spot to remember when weather is better.

NEW MEMBERS - Welcome!

Carol Coulson
628 Dayton St.
Edmonds, WA 98020

Joyce Harvey
8229 56th Dr. NE
Marysville WA 98270

Janet Wright
894 W. Rocky Point Dr.
Cannon Island WA 98292



Color Slide Competition for Clubs Nature Division

The October Nature slides have been returned by the judging club, P.G. of Nova Scotia and show the following points:

What a View	by Don Rapelje	9 Pts.
Death by '64 Earthquake	by Dick Balnicky	10 Pts.
Huckleberry	by Don Rapelje	10 Pts.
Winter on the Snake River	by Jim Geniesse	10 Pts.
Deer	by Frances Chappell	10 Pts.
Brown Bear and Sockeye	by Jim Geniesse	11 Pts.

The composite results have not been received as of this writing but I hope to have them by the December club meeting and will make them known at that time.

As mentioned at an earlier club meeting, we are scheduled to view the 1995/1996 Travel Set made up of the best slides from the last season's S.O.Y. competition. Plan to be at this meeting to again see this great display of slides as we have been privileged for the past several years.

P.S.A. Competition Results by Howard Hansen

International Club Slide Competition

The October results from this competition have been received and show that the Pilchuck Camera Club received a total of 53 points from the first competition of the season and is in a tie for 11th place out of the 25 clubs in group D. The results from this judging, which was hosted by the Bay Area Photo Club, of Texas, are as follows:

Some Fence	by Don Rapelje	6 Pts.
Frozen Wheel	by Tom Clemans	7 Pts.
Grizzly and Sockeye	by Jim Geniesse	8 Pts.
Sittin' in a Hole	by Peggy Lynn	8 Pts.
Ornamental Cabbage	by Janet Rapelje	10 Pts.
Craterscape II	by Dick Balnicky	14 Pts.

Dick Balnicky's slide, "Craterscape II" was one of fourteen slides to receive an Award of Merit for his score of 14 points. Congratulations! Dick.

The December slides will be judged by the Jackson Photographic Society of Jackson, Mississippi.

EXPERIMENTS IN PHOTOGRAPHY

SOAP BUBBLES

Interesting and colorful designs may be photographed by the following method: purchase a jumbo soap bubble kit, which consists of an 8" in diameter plastic hoop with a handle, a shallow plastic dish and a bottle of soap bubble solution. (Or make a hoop from a wire coat hanger, and use an aluminum pie plate to hold the bubble solution.)

Place some of the bubble solution in the dish, dip the hoop in it and pick up a film of solution on the hoop. Changing patterns of rainbow colors will form on the surface of the soap bubble film.

Photograph these patterns with a background of black cloth or paper. Exposure can be determined by a meter reading from the angle the picture is taken.

ICE

Break up pieces of ice into various shapes. Stack up the ice on a sheet of aluminum foil and light this setup with different colored floodlamps. Rearrange the pieces of ice and the lights until a pleasing composition is attained. Photograph the result. For variation, try lighting from different angles, including back lighting; various combinations of colored lights, and colored background material.

As printed in the July 1982 Pilchucker.

JOIN THE FUN OF PSA!



Shooting Without the benefit of a Tripod

Sometimes, for one reason or another you just can not use a tripod. When that happens--

Take a boxer's stance, left foot forward right foot back, about the width of your shoulders. Plant your weight evenly on both legs, and keep your elbows in tight to your body. So often I have seen photographers with their elbows sticking out parallel with the ground. If possible take a kneeling position, right knee on the ground, left knee up rest your left elbow on your left knee. Do not place your elbow directly onto your knee, as it will roll around. Snug the upper portion of your arm, just above the elbow, into your knee so that it is solid. The most solid position (just ask any competition rifle shooter) is the prone position. This works well for shooting wildlife. It works even better if you shoot off of a sandbag. When you go prone, cross your ankles and roll slightly to your left side. It takes the weight off of the diaphragm and makes breathing easier. Take a deep breath, let half of it out and squeeze the shutter release **slow and steady**.

CHRISTMAS GREETINGS

The holiday season is fast approaching and now is the time to pick the picture you would like to place on your greeting cards. If you don't have a special one, you still have time to create one. There are many blank cards that would be just right for that special photo. What better way to wish your friends and relatives a happy holiday.

In the Everett area, The Paper Zone on Evergreen Way carries note cards with an area just right for gluing a photo on the front. 3M Photo Mount spray adhesive works well for attaching the photo or double stick tape will also do the job. Camera stores sometimes carry Christmas cards which have a slot to slide a photo into. These are quick and easy.

Photos also make nice Christmas gifts that can be mounted, framed and autographed by you. If you cut your own mats and collect old frames from garage sales this is an economical and extra special gift to give. The frames can be plain or painted to compliment the photo.

If you have taken several pictures of family members, put them in a small album and give them as gifts. Photos are always appreciated.

Whatever subject you choose to photograph, no matter how routine, make something of it.



MERRY CHRISTMAS

AND A

HAPPY NEW YEAR

DECEMBER

HAPPY BIRTHDAYS

Bessie Smith Dec. 10
Suzanne Ladd Dec. 24
Norman Jensen Dec. 27
Ethel Geniesse Dec. 28

HO

HO

HO!

CHRISTMAS SOCIAL

All members bring their favorite Christmas Goodie for the Christmas Social at the December meeting.



Dick Blalicky
presented slide
show of Samoa
at Christmas party.



Janet Wright & Joyce Harvey
Welcome to Pilchuck 12/1